

# Oregon

## Scottish House Builders Health & Safety Forum

Fire Guidance in Practice

---

Design & Application



# Content

References

Products

Design

Examples

Procurement

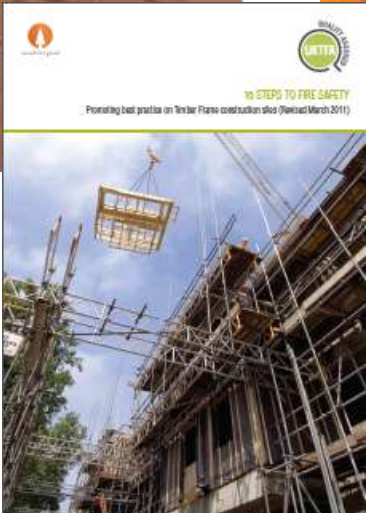
Construction

What does it all mean



# Site Safety DESIGN

Many publications used for reference;  
Construction Confederation /Fire Protection Association  
Health & Safety Executive  
NHBC /UKTFA  
CDM



# Site Safe DESIGN

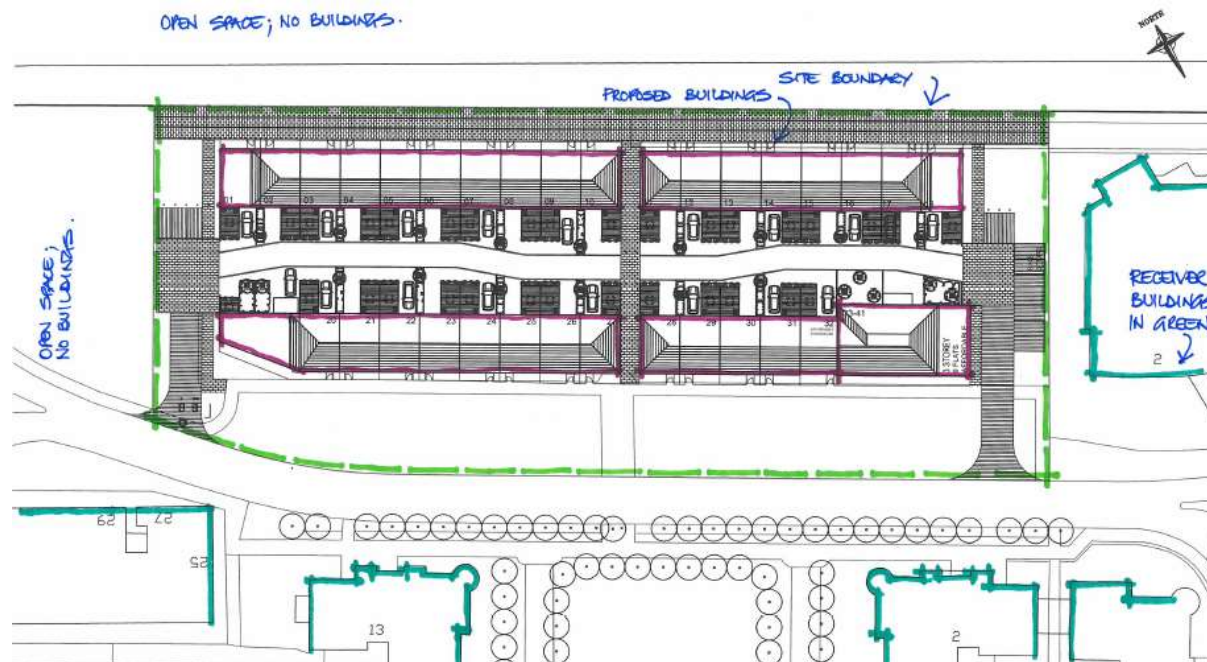


- In at the earliest stage possible (feasibility)
- Avoid any potential 'nasty' surprises
- Layout optimisation
- Better cost certainty



# Site Safe DESIGN

- Establish site boundaries and locate surrounding property (& use)
- Delineate the location of proposed new buildings within site
- How many storeys are there and total floor area of blocks
- Over 600m<sup>2</sup> (2500m<sup>2</sup>) registration with CFOA required





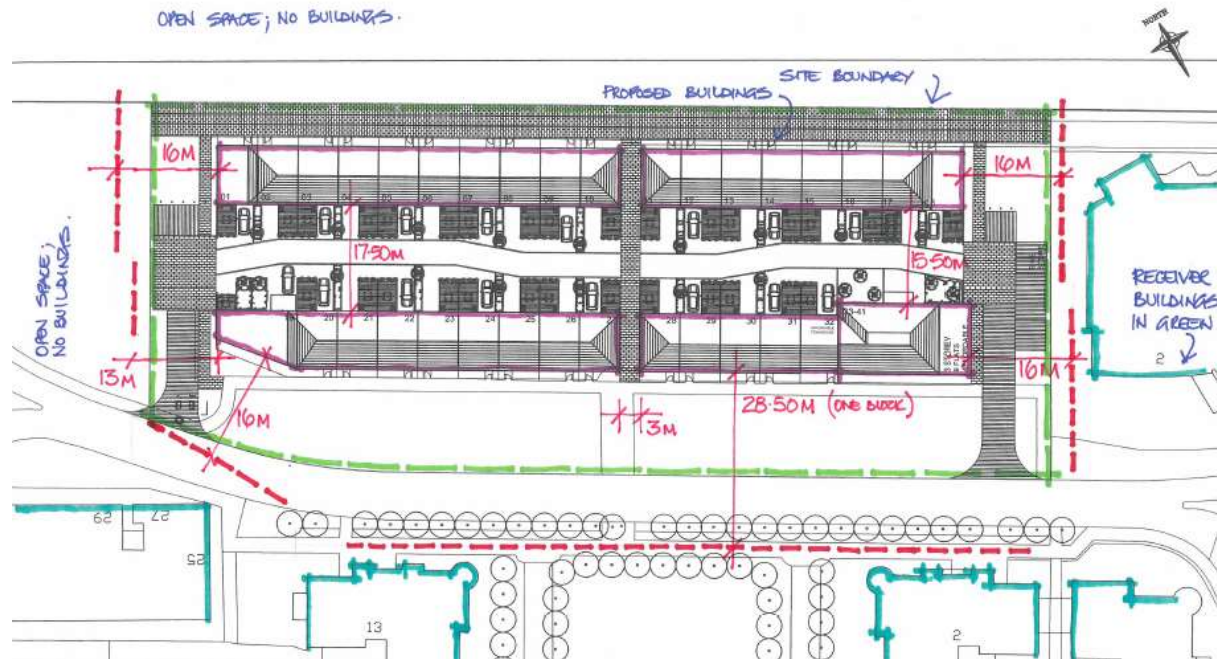
# Site Safe DESIGN

Determine separating distances to receiver buildings

In reality Category A preferred within hierarchy

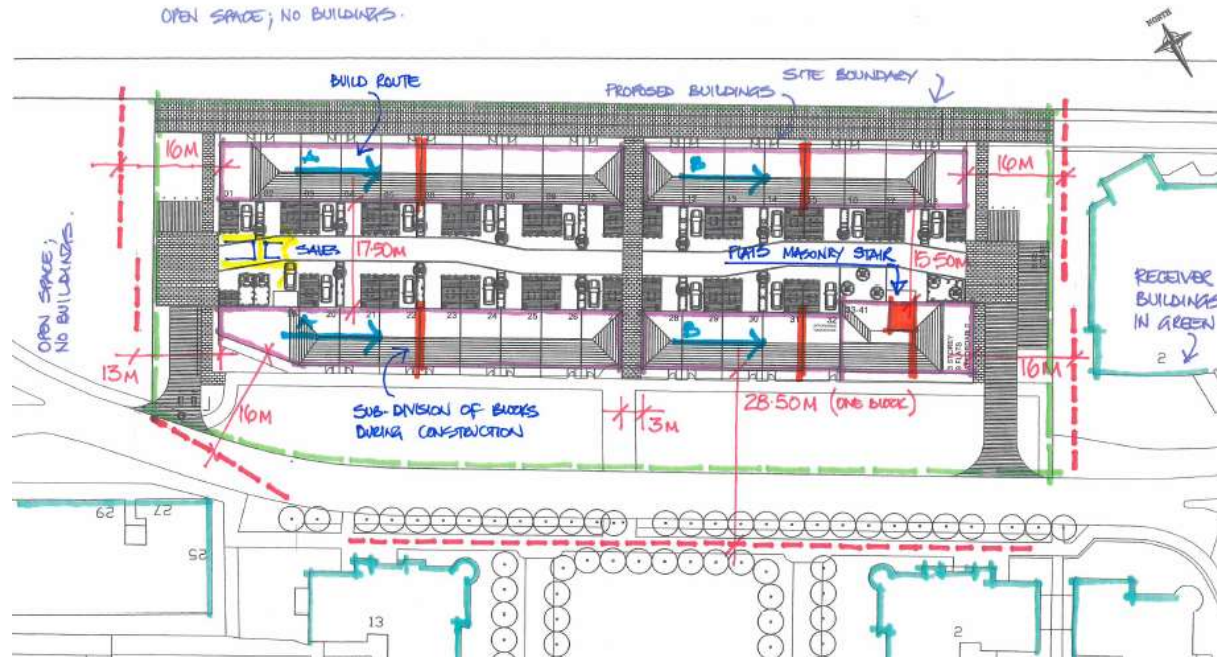
Are mitigation measures required

Build route



# Site Safe DESIGN

- Each block over 50m long; requires sub-division during build
- Breaks at party walls and /or flat stairwells
- Agreed build route AND occupancy
- Minimal cost

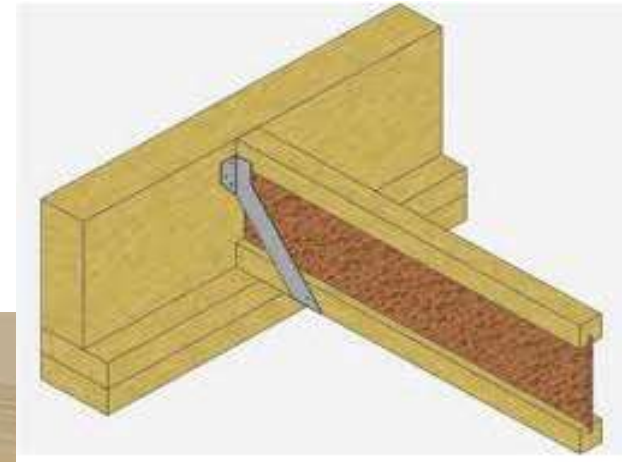
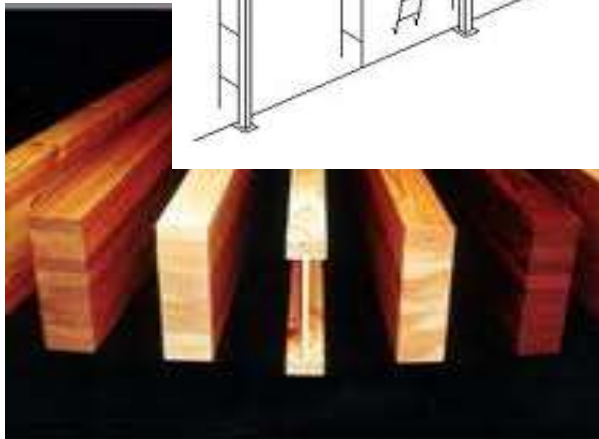
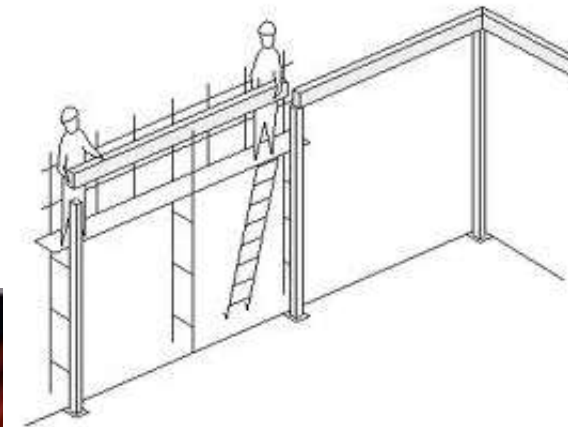


# Multi-storey

Allowance made for disproportionate collapse

Greater use of engineered timber

Suitable design?





# Multi-storey

Oregon examples;  
Plymouth  
Wakefield  
Watford  
Manchester



# Site Safe PROCUREMENT

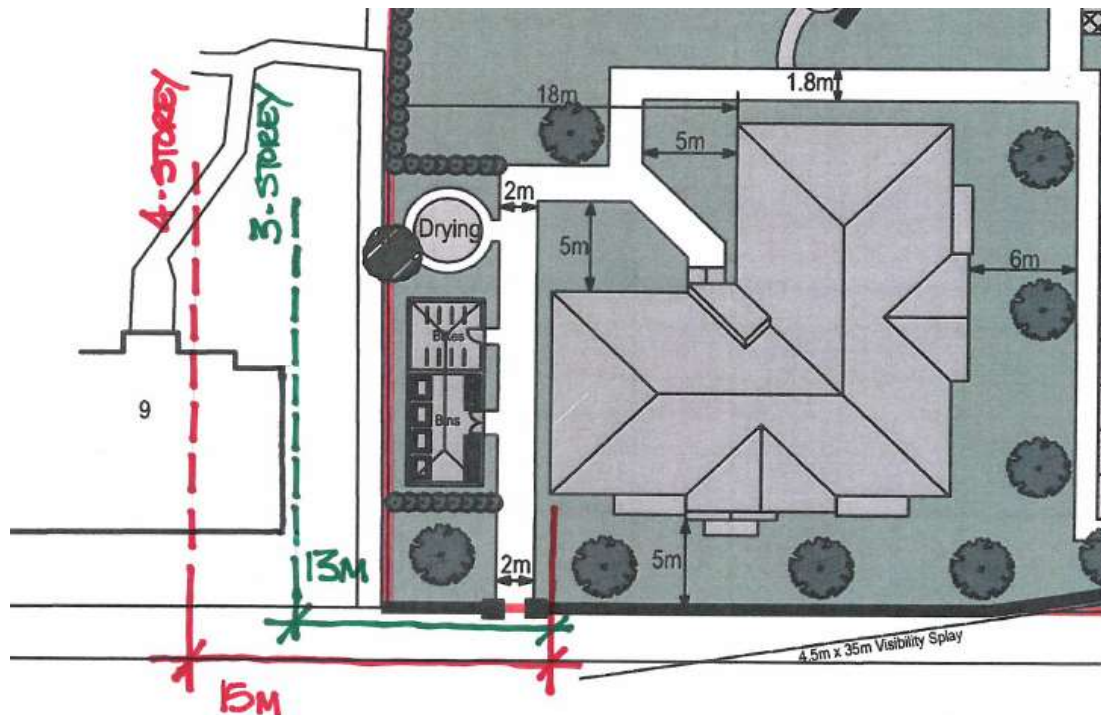


- If not in early, next best stage to feasibility; essential
- Again, avoid any potential 'nasty' surprises
- Solution AND build optimisation



# Site Safe PROCUREMENT

Gable end of four storey block, separating distance beyond receiver  
If build 'reduced' to three storey separating distance is fine  
Ground floor blockwork (and returns) built  
Built before fourth floor erected



# Site Safe CONSTRUCTION



- At this stage all major decisions should have been made by all
- Occasionally changes (spanners) can be thrown in the works
- Re-assess the site and review guidelines as before
- Most cost effective solutions at time employed





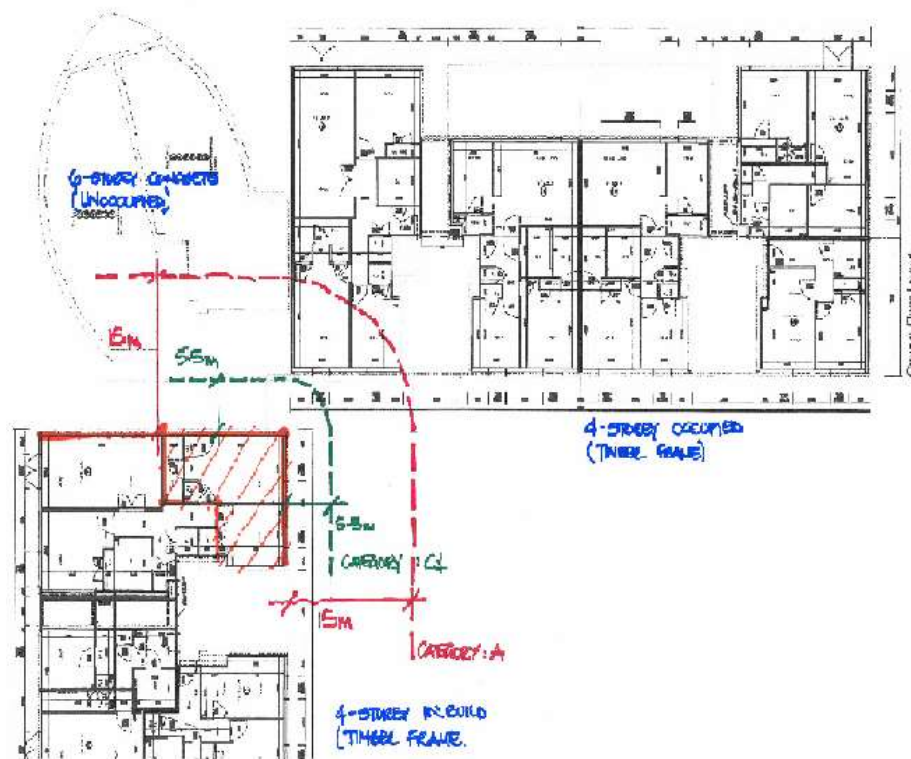
# Site Safe CONSTRUCTION

New build route due to unforeseen circumstances & good sales

Four storey timber frame next to occupied wing

Category A no longer allowed

Category C1 used



# What does it all mean



**Construction of medium rise timber frame -**  
tried & tested structural solutions available now

**Development of taller buildings -**  
continuing research & development of new composite materials

**Proactive industry approach to fire issues -**  
working with others to provide adequate guidance and details

**Timber frame as a form of construction -**  
good planning, correct specification, site safe - use with confidence

End of this session, and (say what you see)

