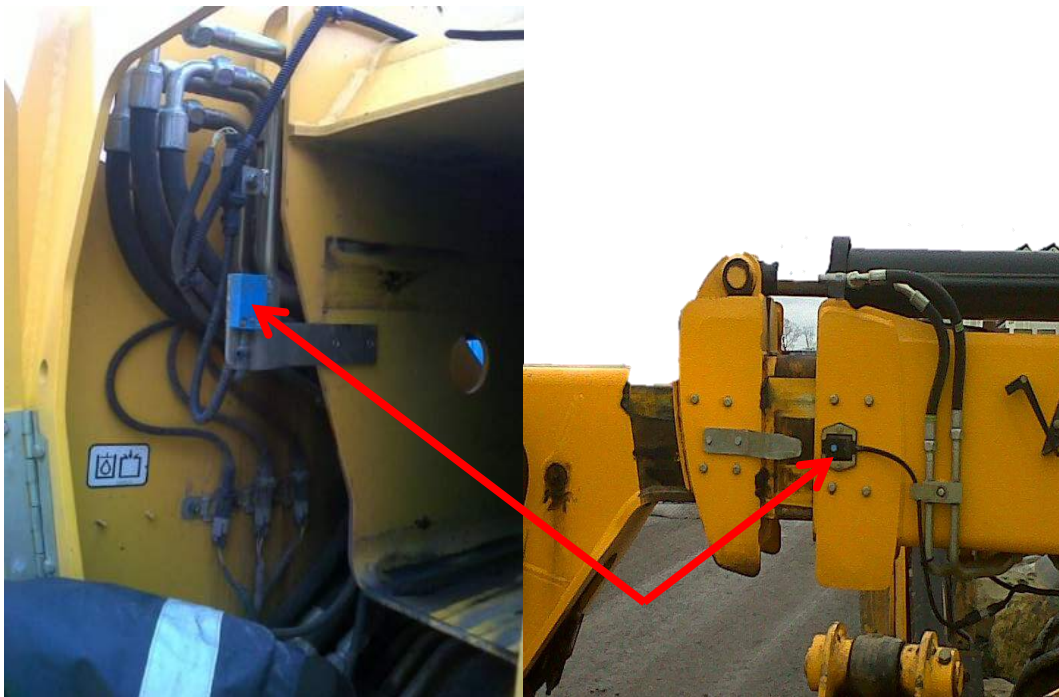


HEALTH & SAFETY ALERT

Telehandler Sensors

During a recent routine inspection on a telehandler, a service engineer found a coin taped onto the inhibitor which controls the jack legs.

The purpose of this inhibitor is to restrict the extension of the boom when the jack legs are in the raised position and conversely the operation of the jack legs when the boom is extended. When the boom is extended the sensor is uncovered and the operation of the jacks is disabled.



By covering the inhibitor switch, the sensor tells the controls that the boom is closed, therefore the jack legs can be operated even if the boom is at full extension and/or at full height.

This inhibitor is located in different positions dependent upon the size of the telehandler in use. Some inhibitors are fitted at the rear of the machine, covered by a locked door and on the larger telehandlers it is located on the boom of the machine (as shown above).

The consequences of covering the sensor would cause the machine to believe the jack legs are fully deployed and thus allowing the machine to operate at maximum load, height and reach. Therefore, putting the machine in this position, without its jack legs deployed, would put the machine in an unsafe and unstable operating mode, which could lead to the possibility of the machine tipping over.