

HSE Update

February 2014

Graeme McMinn

Inspection Initiative

Runs from 10/02/14 to 07/03/14

Across Scotland

Targeting New Build Housing

Energy Efficiency Work

Matters of Evident Concern

Use of F10 lists and LA planning lists

No additional enforcement expectation

Inspection Initiative

New build housing topics

External falls

Internal falls

Welfare

Traffic Management

Plant safety

Competence

Good Order

Lifting

Fire safety

Health issues – dust control, manual handling

Matters of evident concern

Inspection Initiative

Energy Efficiency topics

Working at height

Good Order

Gas Safety

Welfare

Asbestos

Language Issues

Supervision

Matters of evident concern

Inspection Initiative – House Build

External Falls

scaffold safety

scaffold inspections

scaffolder competence

scaffold alterations

loading bays

falls from vehicles and
containers

Inspection Initiative – House Build

Internal falls

kit erection

staircase void

stepladder use

trestle use.

Welfare

adequate accessible toilet
and warm water washing
facilities, canteen and
drying room area.

Inspection Initiative – House Build

Traffic management – vehicles and pedestrians segregated as much as possible, traffic plan in place, avoidance of reversing on site where possible.

Plant safety – telehandlers and excavators, sample thorough exam certificates, quick hitch and general condition of other plant on site. Being driven safely?

Good order – externally are pedestrian routes and scaffolds clear to walk, internally are plots free from trip hazards and nailed timber?

Inspection Initiative – House Build

Competence – site manager, scaffold inspections, sample some training records of telehandler, excavator and dumper drivers. If there are site wide issues that might be linked to competence of site management, assess duty to plan manage and monitor of PC.

Lifting – if lifting is being done on site – check lifting plan, is area segregated, access to loading bays, crane certificates and training records.

Health issues – dust suppression or collection systems in use, RPE worn properly and fitted, mechanical lifting assistance with blocks and plasterboards sheets. HAVs for ground workers for use of whacker plate or demolition breakers.

Inspection Initiative – House Build

Fire safety – fire risk assessment in place,adequate means of raising alarm, suitable placements of fire call points and extinguishers, hot works, smoking. If larger scale timber kit project in built up area or neighbouring vulnerable site consider off site risks

Matters of Evident Concern –

Excavations, public safety, access to site, structural safety, etc. etc. etc.

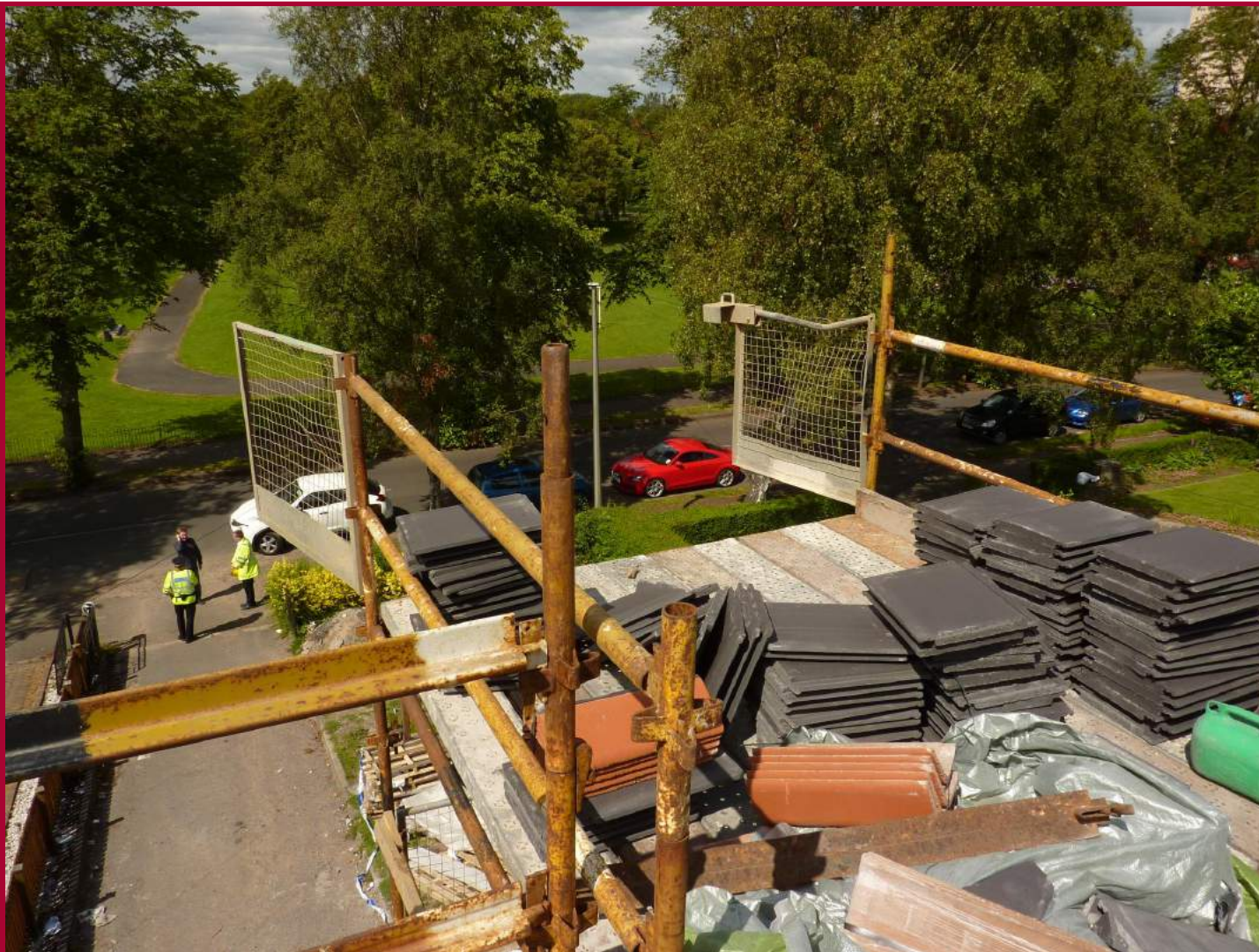
External falls



External falls – loading bays



External falls – loading bay



External falls – missing component



External falls – edge protection



Internal falls – stairwell void



Internal fall - trestles



Internal fall – fall through kit



Traffic management – no segregation



Traffic management – no segregation



Traffic management not the best place to park the excavator



Traffic management – unsafe roadway



Traffic management – good start



Good order – scaffold access route



Good order – internal trips



Good order – how deep is that mud?



Good order – scaffold tidiness?



Good order – broken ankle waiting to happen



Good order – where do you start?



Excavations – note trench boxes in background



Excavations – is this good enough?



OH Power Lines – not best place for material storage



Safe Access to work?



Overload?



Controlling Dust?



Controlling Dust?



Controlling Dust?



Inspection Initiative – Energy Efficiency Work

- **Work at height** – access to roofs, scaffold safety, scaffold erection and alteration, scaffolder competence, scaffold inspection.
- **Good order** – is scaffold free from debris, is site area being kept clear of debris.
- **Welfare** – adequate accessible toilet and warm water washing facilities, canteen and drying room area.

Inspection Initiative – Energy Efficiency Work

- **Gas safety** – if properties have gas heating, what arrangements are in place to ensure gas flues through roof space or external walls are being protected from movement or disconnection? Is there a relevant risk assessment.
- **Asbestos** – does work requires a survey, asbestos in roof space or soffits etc, has it been removed in line with soffit guidance. Training of those doing any asbestos work or awareness training needed.
- **Language issues** – are there non-English speakers on site, what arrangements in place to have site inductions and risk assessments/method statements translated so that these workers understand safety issues on site.

How not to fit solar panels!



Gas flue protection?



Inspection Initiative

Arrangements in place to limit visits to good performers

Expectation that companies will alert their other sites to any issues identified during an inspection

Expectation that PCs will track back sub contractor issues with their senior staff.

Letters will contain advice linking to Scottish House Builders Health and Safety Forum

Update

HSE in Scotland

Iain Brodie – Head of Operations

Isabelle Martin – PI Edinburgh

Jim Young – PI Glasgow from 04/14

New publications

Control of Substances Hazardous to Health (COSHH) (L5): reflects other ongoing reviews of technical guidance associated with COSHH and clarifies specialist terminology wherever possible.

Asbestos (L143): ACOPs L127 (The management of asbestos in non domestic premises) and L143 (Work with materials containing asbestos) have been consolidated into one single revised ACOP.

Dangerous Substances and Explosive Atmospheres Regulations (L138): brings together advice from the previous five ACOPs with improved navigation to enable the dutyholder to find the advice that is of most interest to them.

New Publications

Gas Safety (L56): revisions include the requirement for those carrying out gas work to be adequately trained; update of material for appliances and flues, concerns around flues in voids and updated guidance to reflect the introduction of smart meters.

Workplace (Health, Safety and Welfare) (L24): revisions include simplifying the language; improving guidance and referring to the most up-to-date and relevant standards for advice; and removing out-of-date duties and requirements that are superseded by newer legislation.

Legionnaires Disease (L8): provides information on identifying and assessing sources of risk; preparing a scheme to prevent or control risk; implementing, managing and monitoring precautions; keeping records of precautions and; appointing a competent person with sufficient authority and knowledge of an installation to help take measures needed to comply with the law.

Update



Triennial review report: Health and Safety Executive 2014 - A 3

yearly review of the function, form and governance of the Health and Safety Executive.

<https://www.gov.uk/government/publications/triennial-review-report-health-and-safety-executive-2014>

Heather Bryant, HSE Chief Inspector of Construction – [interview with Health and Safety at Work magazine](#)

<http://www.healthandsafetyatwork.com/hsw/interview/heather-bryant>

HEALTH AND SAFETY LAW POSTER – reminder

The new [2009 health and safety law poster](#) replaces the version published in April 1999 and **must be displayed from 5 April 2014**.

As well as a download, the new 2009 leaflet is also available as a pocket card and replaces the leaflet published in 1999.

Update – Work at height

The Health and Safety Executive (HSE) has overhauled its guidance for working at height, setting out in clear, simple terms what to do and what not to do – and debunking common myths that can confuse and mislead employers.

<http://www.hse.gov.uk/work-at-height/index.htm?ebul=hsegen&cr=2/03-feb-14>

Includes new guidance on use of stepladders and ladders.

HSE Update



Questions
Or
Lunch?

