

# 2014/15 Plan of Work

Graeme McMinn

Principal Inspector

# Key Themes for 2014/15.....

- Start a step change in Occupational Disease and ill health **prevention**
- Promote CDM messages, e.g.
  - Role of Client
  - Reduce paperwork
- Track-back to CDM duty holders
- Promote involvement in CDM 2015 consultation
- Continue support for WWT
- Promote LWIT as a tool for improvement
- Notify illegal employment of Migrant workers

# 2013/14 Inspections

## Priority sectors

**Small Sites (35%) – 45% delivered**

**Refurbishment (25%) – 36%**

**Asbestos (20%) – 12%**

**Major Projects & Large Contractors (5%) - 1%**

**Local Priorities (15%) – 6%**

# 2014/15 – 9600 Inspections

**Priority sectors remain with slight change and added in home build**

**Small Sites (35%)**

**Refurbishment (30%)**

**Asbestos (11%)**

**Home build (5%)**

**Major Projects & Large Contractors (5%)**

**Local Priorities (15%)**

# Approach to visits remains same

- Matters of Evident Concern
  - Inc' migrant workers
- Matters of potential major concern, e.g.
  - Structural collapse
  - Fire
  - Cranes & lifting
- Normal visit priorities
  - Asbestos, Respiratory Risks, WAH, Manual Handling, Site Transport, Public Protection, noise and vibration.....



# Asbestos

- 1200 inspections of licenced asbestos work in line with targetting of at least one visit per licensed contractor and at least 3 visits per priority visit contractor.
- Asbestos analysts project of 60 interventions of 30 site assessments and 30 head office visits

# New work for 2014/15

- **Health Inspection Initiative**
  - Starts 23rd June (TBC) – 2 weeks
  - 500 inspections
  - Larger sites
  - **Focus on:**
    - Hazardous substances (COSHH)
    - Manual handling
    - Noise & vibration
    - Welfare
    - Examine health management and role of client/designer/CDM-C if appropriate



# New work for 2014/15

- **Home building**
  - Inspection of up to 500 larger sites throughout year
  - **Focus on:**
    - Hazardous substances
    - Manual handling
    - Noise & vibration
    - Transport management
    - Supervision
    - Welfare

# Scottish Inspection Campaign

4 week campaign across Scotland (Feb/March 14)

132 sites visited

153 contractors inspected

13 prohibition notices

7 improvement notices

54 notices of contravention (1/3 of contractors inspected were in material breach)

Main issues on larger sites – internal site tidiness and control of dust (wood and low toxicity)

Main issues on smaller sites – work at height, general site tidiness and control of dusts.

# New work for 2014/15

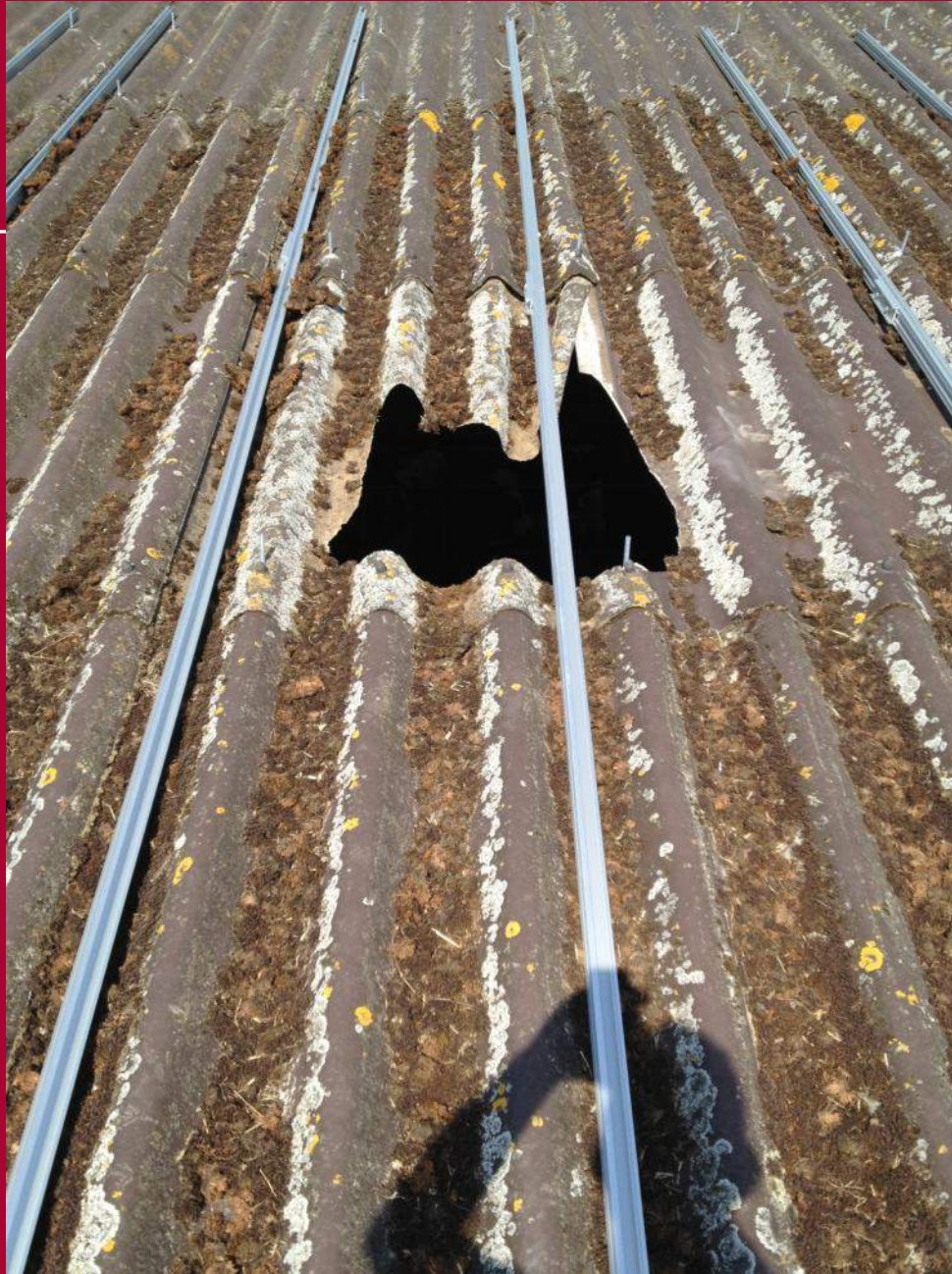
- **Loft conversions**
  - Inspection of up to 100\* sites
  - **Focus on:**
    - WAH
    - Asbestos
    - Manual handling
    - Protecting the public
  - Duty holder event – minimum 1 per unit





## New work for 2014/15

- **Commercial solar panel installation**
  - Inspection of up to 100\* sites
  - Focus on:
    - WAH, inc' fragile materials
    - Asbestos
    - Manual handling
    - Client role
  - Duty holder event – minimum 1 per unit (CITB Info Sheet).



# 2014/15 Continuing Work

- Fragile Materials

- Inspections

- 250 Commercial roofing

- Construction on farms

- Estates Excellence events

- Busy Builder Sheets

- WWT SHADs

- **EXAMINATION OF CLIENT ROLE IN ALL VISITS.**



## 2014/15 Continuing Work

- **Improving Leadership via LWIT**
  - Improving Duty Holder Compliance work closing out
- Replace with:
  - Each team to organise an LWIT briefing for local duty holders (10-15 attendees)
  - D/H creates an action plan
  - Follow-up 3 months later
  - Decide on further action as required

# 2014/15 Continuing Work

- Large contractor interventions
  - Top 30, includes -
    - Leadership (directors)
    - Health management
    - Emerging from recession – supervision
- Temporary Demountable Structures
  - 40 site inspections
- Timber Frame Buildings Fire Risks
  - 40 site inspections

# Investigations

- Investigation of all mandatory accidents, dangerous occurrences and reported cases of ill health and disease.
- Investigation of all reported concerns classified as high risk activity.

# Local Priority

- One major project per inspector for head office intervention
- Domestic solar panel and energy efficiency activity
- Underground services
- Demolition