

Welcome to CDM 2015

**Scottish House Builders H & S
Forum – 06/05/15**

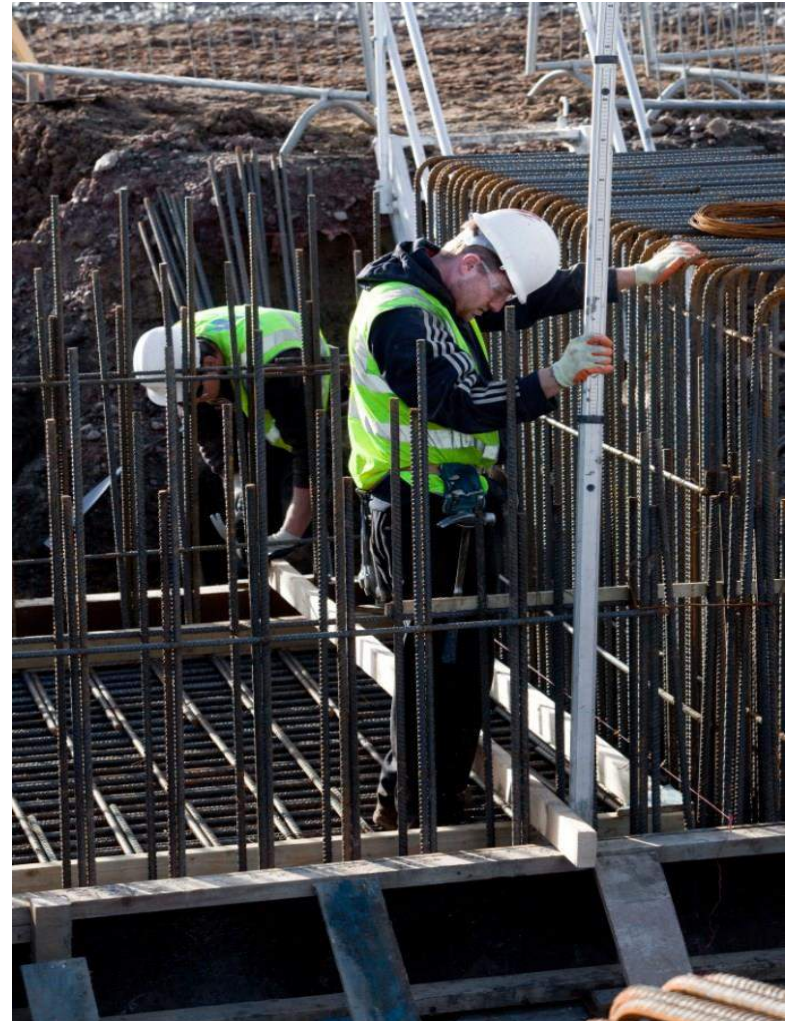
Graeme McMinn

HM Principal Inspector of Health and Safety

What this event is about

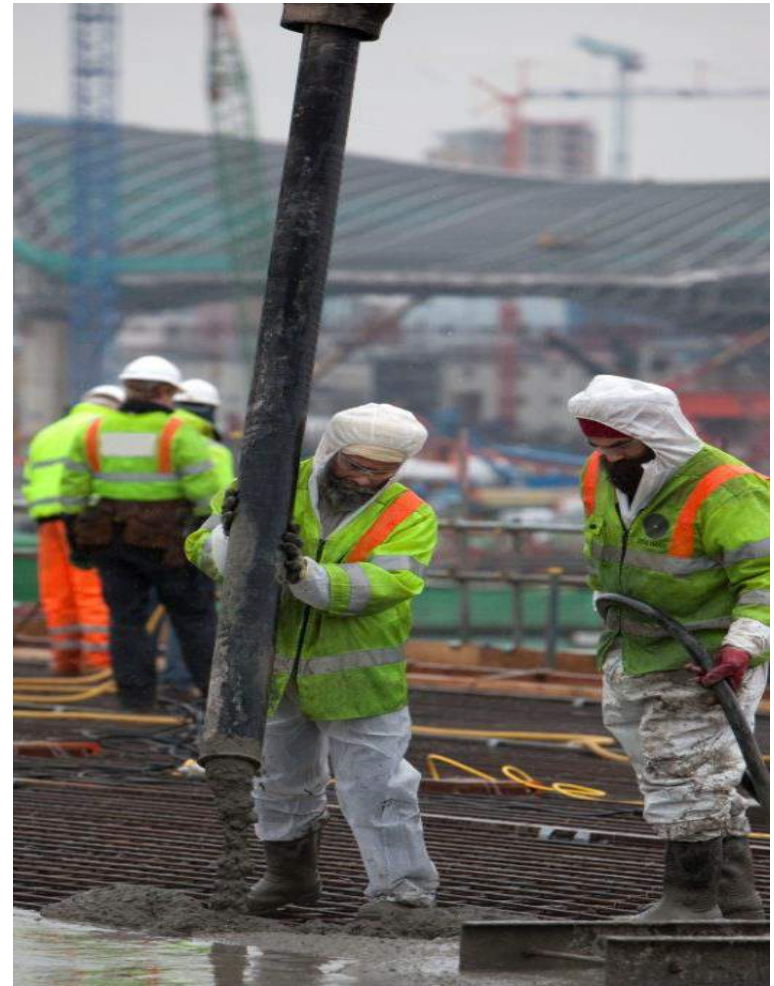
- A brief background to the changes
- An outline of HSE's policy objectives
- An outline of the regulatory changes
- How HSE will approach CDM 2015 during visits

**It is not a detailed
examination of every
regulation**



Background

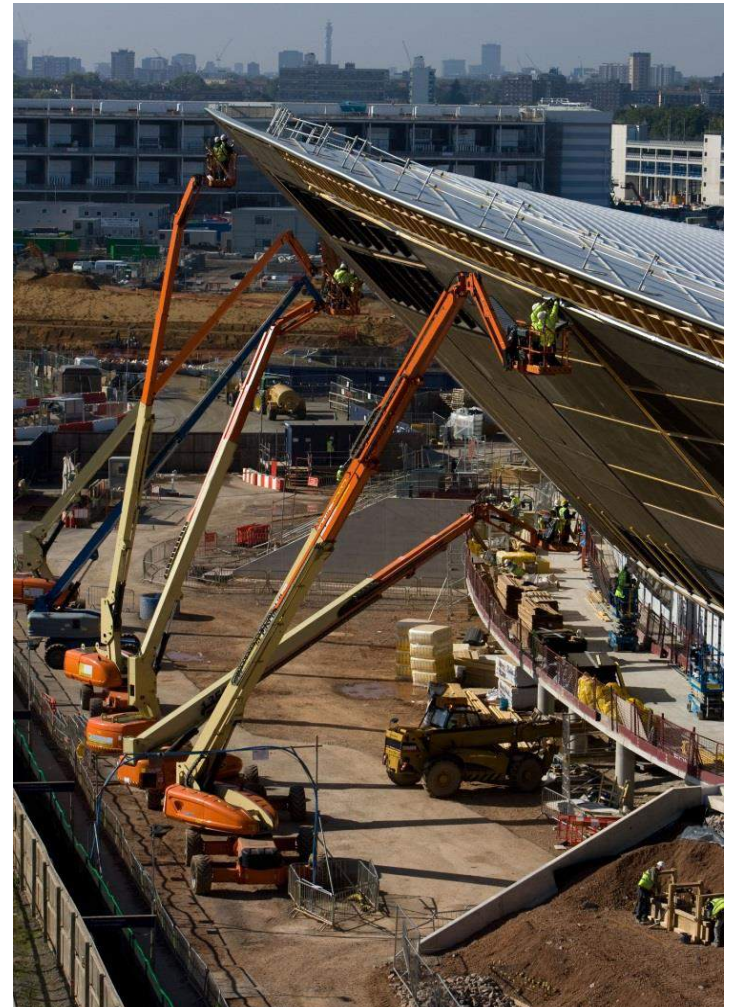
- Review of CDM 2007
- Considerations when changing the Regulations
- Consultation



Securing construction health and safety



- Managing risks
- Appointing right people at the right time
- Information, instruction, training and supervision
- Cooperation, coordination and communication
- Consultation and engagement with workers



What is CDM 2015 about?

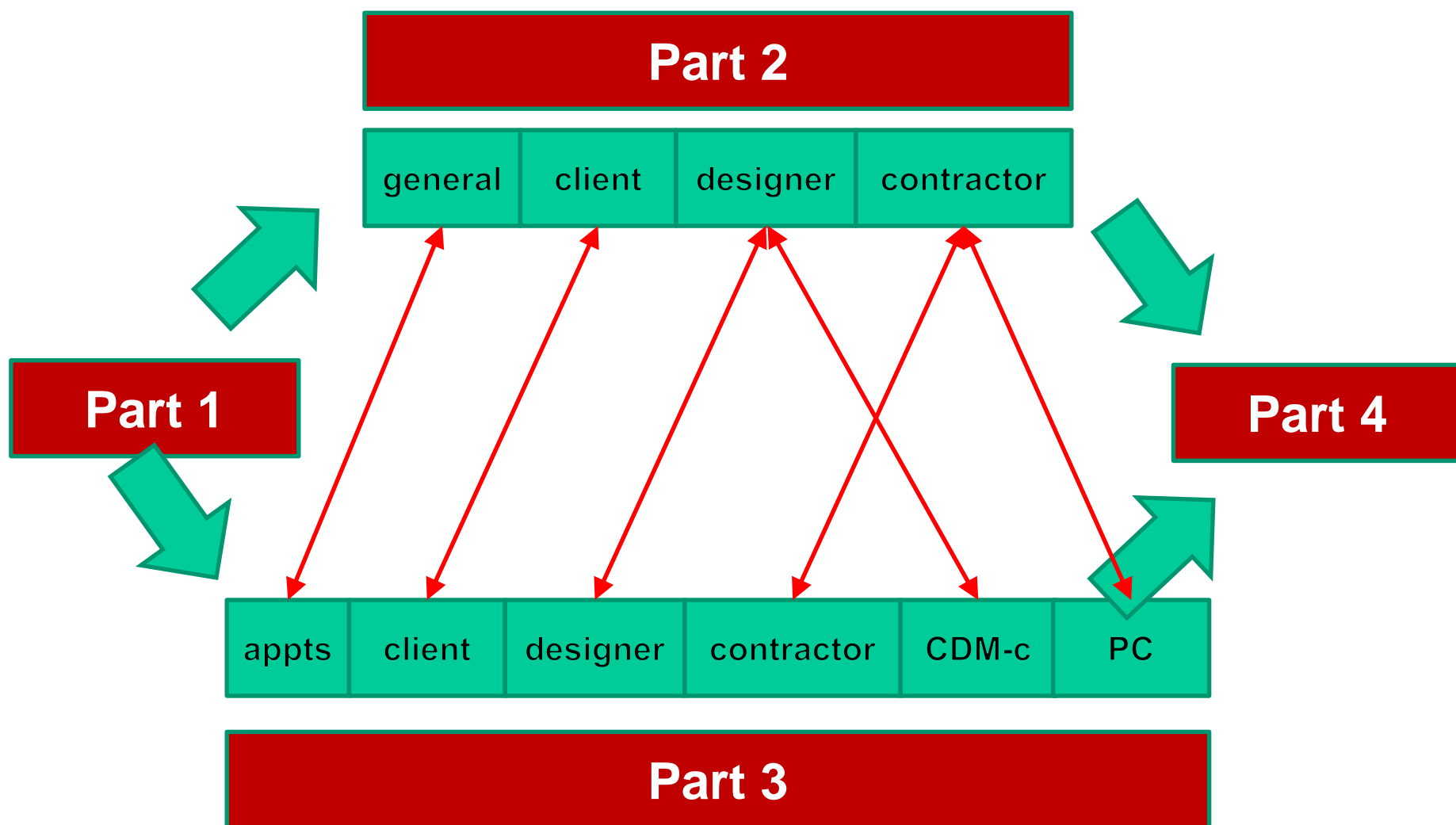
CDM 2015 applies to all construction work.

The Regulations set out the requirements for managing health and safety on construction PROJECTS

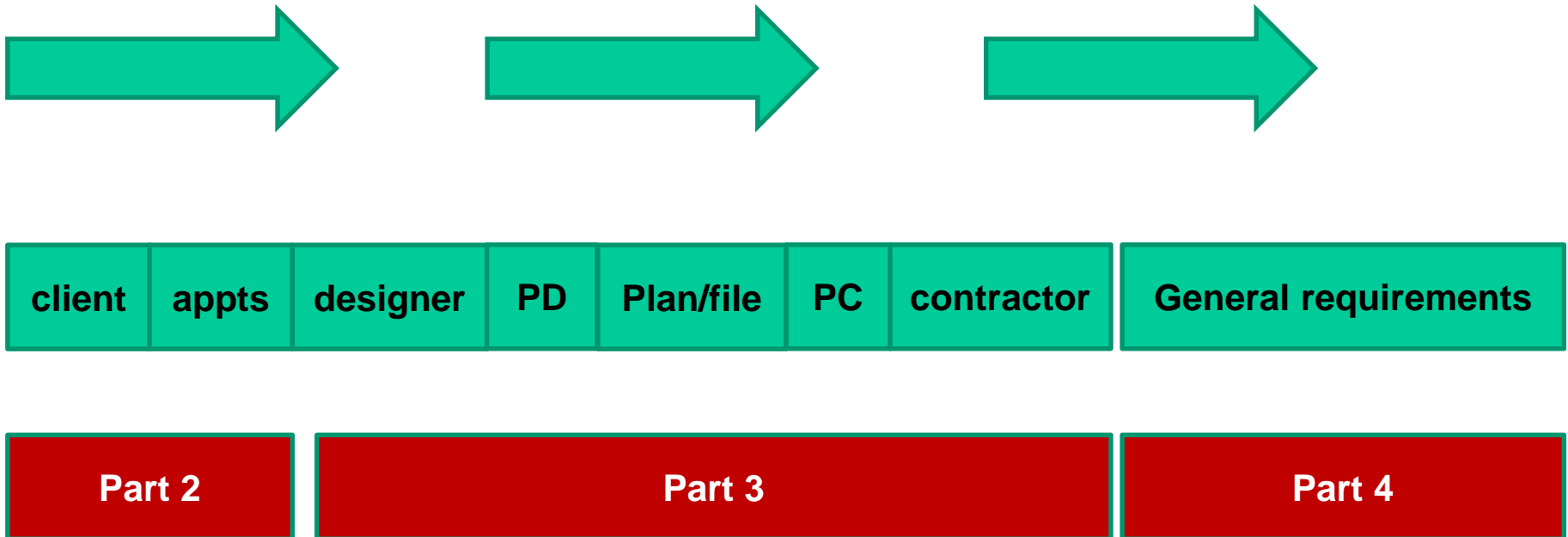
A project is more than a construction site



CDM 2007



CDM 2015



The structure of the Regulations has been simplified

What stays 'broadly' the same



- Application to **all** projects
- Role of the Principal Contractor
- Part 4 technical standards for construction sites
- Schedule 2 – welfare requirements
- Co-ordinators for H&S in the pre- and construction phases



Outline of main changes

- Simplified structure
- Client – greater responsibility
- Domestic client exemption – removed
- CDM co-ordinator role - removed
- Principal Designer role (PD) – introduced
- ‘Competence’ – removed in its current form
- Construction phase plan for all projects
- Threshold for appointments – more than 1 contractor
- Notification is a stand alone requirement – not trigger point for additional duties



Dutyholders - Clients

Clients are the head of the procurement chain and the major influence on project standards and culture.

Duties include:

- **Make appointments and arrangements for managing project**
- **Provide pre-construction information**
- **Reasonable steps to ensure PD & PC comply with their duties**

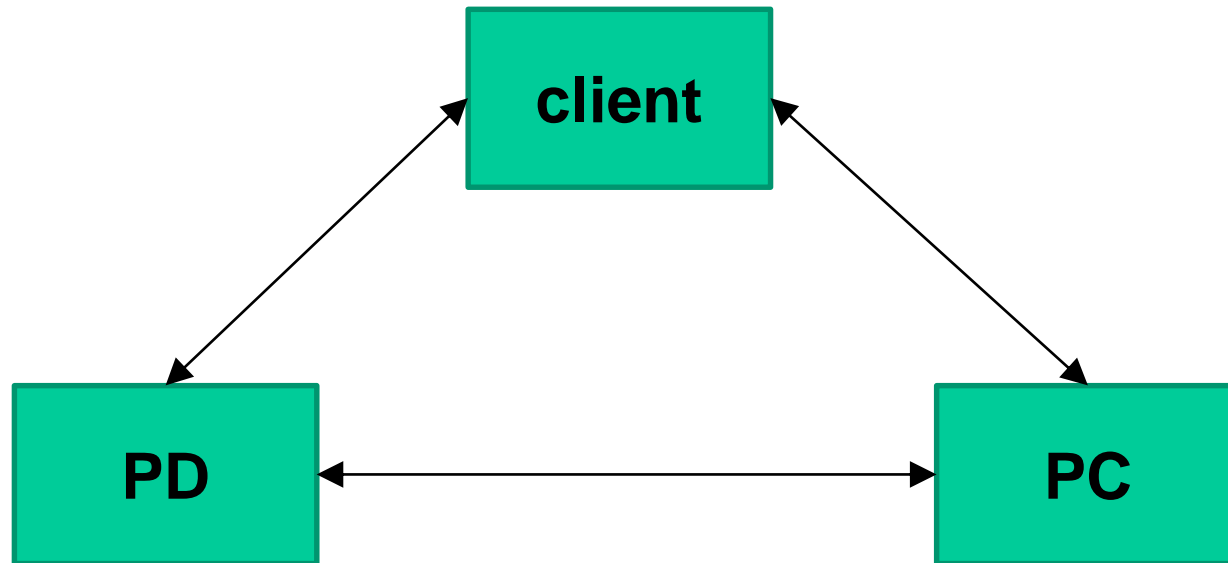


Dutyholders - Clients



- **Domestic Clients duties are deemed to contractor or PC**

The Client's 'Principals'



Pre-construction phase

Construction phase

Dutyholders – Principal Designer



PD is NOT a replacement for the CDMc - PD manages and co-ordinates the design stage of the project.

The function of co-ordination is an integral part of the project.

- **Plan, manage, monitor & co-ordinate** pre-construction phase
- Ensure designers comply with their duties
- Ensure co-operation with client and support the client in providing Pre-Construction Information
- Act as a conduit for information flow



Dutyholders – Principal Contractor

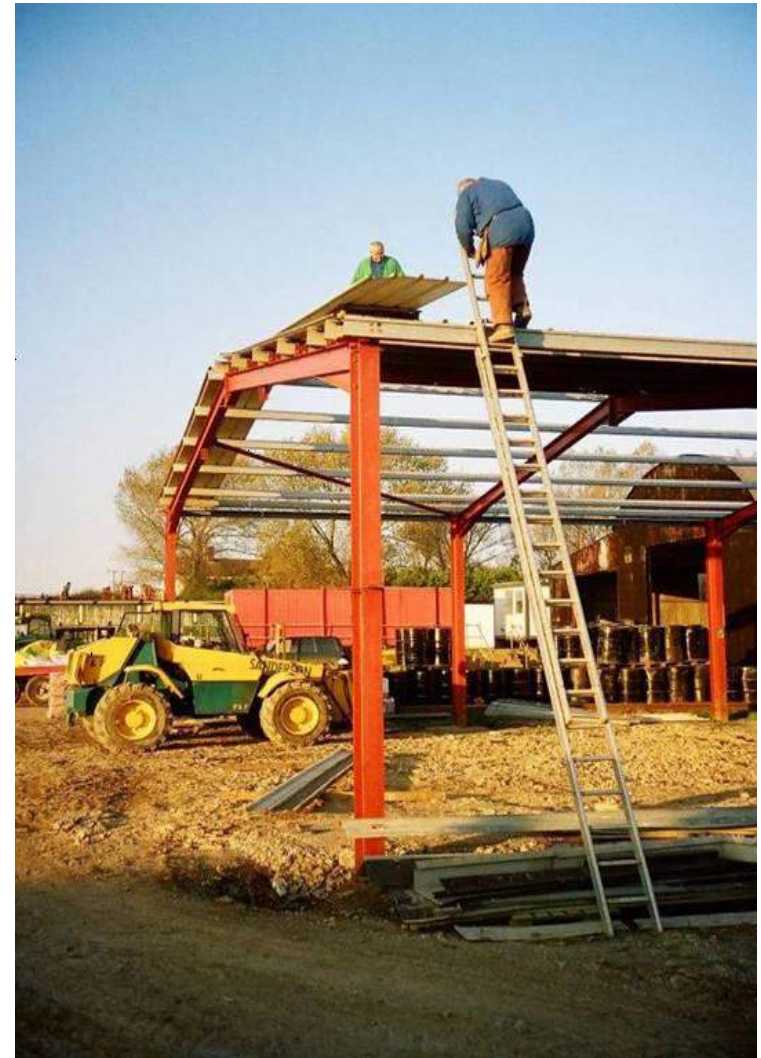


PC manages and coordinates the construction stage of the project

Additional requirements include:

- Liaison with Principal Designer
- Providing information to PD relevant to H&S file
- Engaging and communicating with the workforce

“Leaders in health and safety should have a strong grasp of what is needed in a given situation, make clear decisions and be able to communicate effectively”



Dutyholders – Designer

Designer duties remain similar to those in CDM 2007

Additional requirements include:

- Reduce or control risks through the design process & provide risk information with design drawings
- Refer risks that cannot be reduced or controlled through design to the PD
- Clear hierarchy for design risk management



Dutyholders - Contractor

Contractors' duties remain similar to those in CDM 2007

Additional requirements include

- **Plan, manage and monitor** their construction work
- Comply with directions given by PD or PC
- Draw up a CPP even if they are the only contractor
- Appointment only of those with necessary **SKTE** (or in the process of obtaining it) and supervise.



Competence

Getting the right people for the job

- Individuals
 - **Skills, knowledge, experience and training**
 - Not about card schemes
- Body corporate
 - **Organisational capability**
 - Policies, structures, safe systems in place



Transitional arrangements



Where there is, or is expected to be, more than one contractor on a project:

- where the construction phase has not yet started and the client has not yet appointed a CDM co-ordinator, the client must appoint a principal designer as soon as practicable
- if the CDM co-ordinator has already been appointed the client must appoint a principal designer to replace the CDM co-ordinator by 6 October 2015, unless the project comes to an end before then
- in the period it takes to appoint the principal designer, the appointed CDM co-ordinator should comply with the duties contained in Schedule 4 of CDM 2015. These reflect the duties placed on CDM co-ordinators under CDM 2007 rather than requiring CDM co-ordinators to act as principal designers, a role for which they may not be equipped

Other transitional arrangements are:

- pre-construction information, construction phase plans or health and safety files provided under CDM 2007 are recognised as meeting the equivalent requirements in CDM 2015
- any project notified under CDM 2007 is recognised as a notification under CDM 2015
- a principal contractor appointed under CDM 2007 will be considered to be a principal contractor under CDM 2015

Guidance Package

- 'L' Series guidance
- Possible ACOP in due course
- 6 CONIAC industry guides – endorsed by HSE
- New CDM 2015 HSE website
- 'Have work done safely' leaflet for small commercial clients
- Template construction phase plan
- Smartphone App – Construction Phase Plan for small projects



HSE's approach on sites

- No change to HSE's approach to inspection or investigation
- Risk based, justifiable and proportionate
- Looking 'beyond the site gate'
- Construction phase plan



Sum up

- CDM 2015 changes focus onto management of risk by dutyholders
- Technical standards unchanged
- Strengthen client role
- Domestic clients – duties taken by PD and PC
- CPP required for **all** projects
- Embed better standard of involvement with workforce
- Changes to notifications
- Working with industry to get the message out
- Clearer and easier to hold **all** dutyholders to account

Any easy questions?

