

August 2018

HSE Update

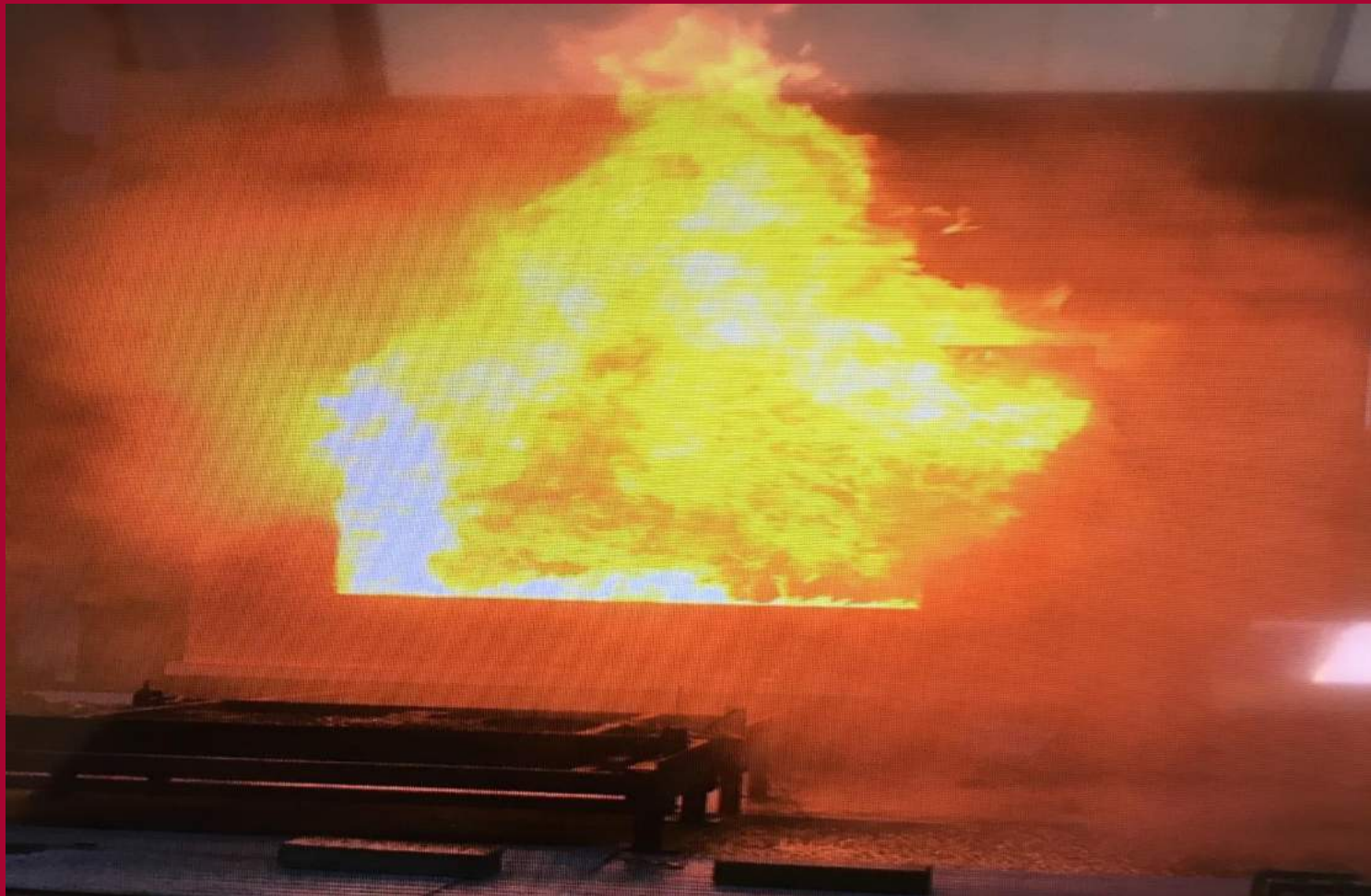
Mark Carroll

**HM Inspector of Health and Safety
HSE Construction Division**

Timber frame fire risk – facing brick lead times

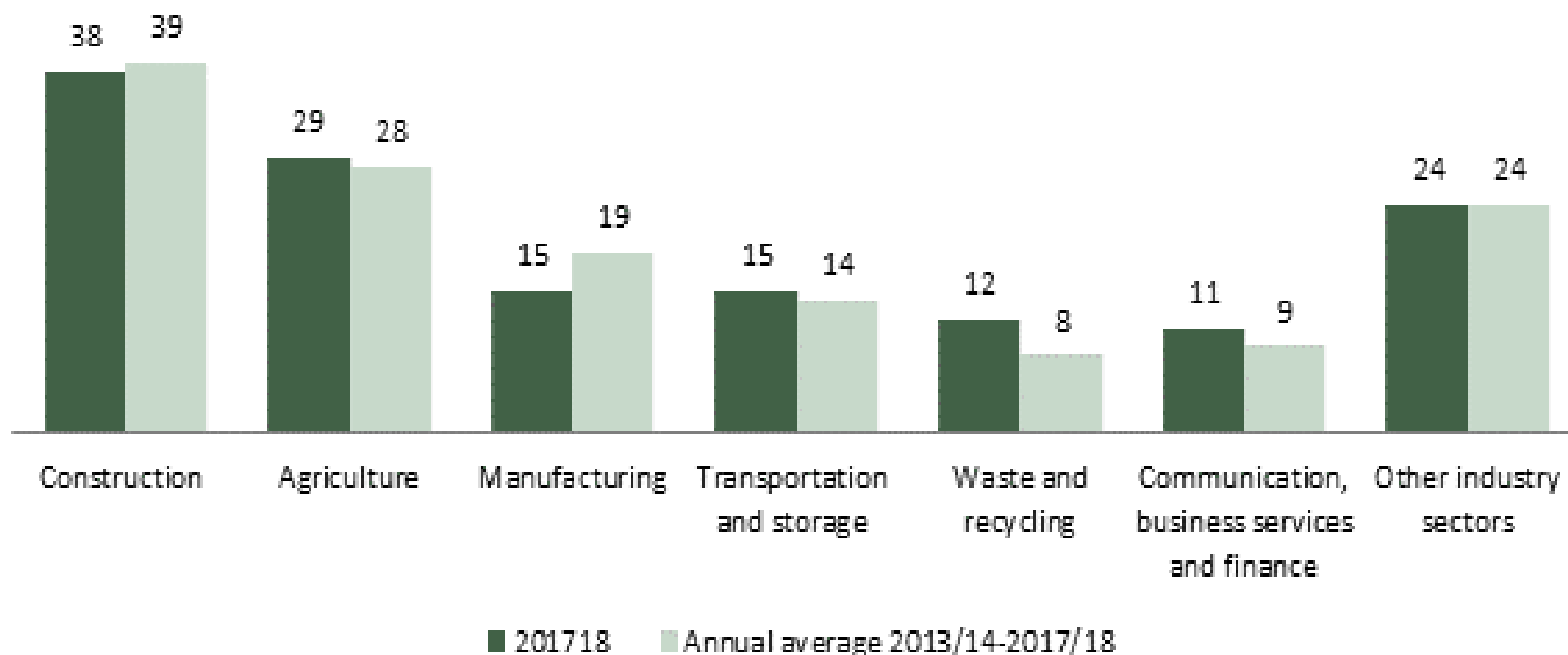


Timber frame fire risk – facing brick lead times



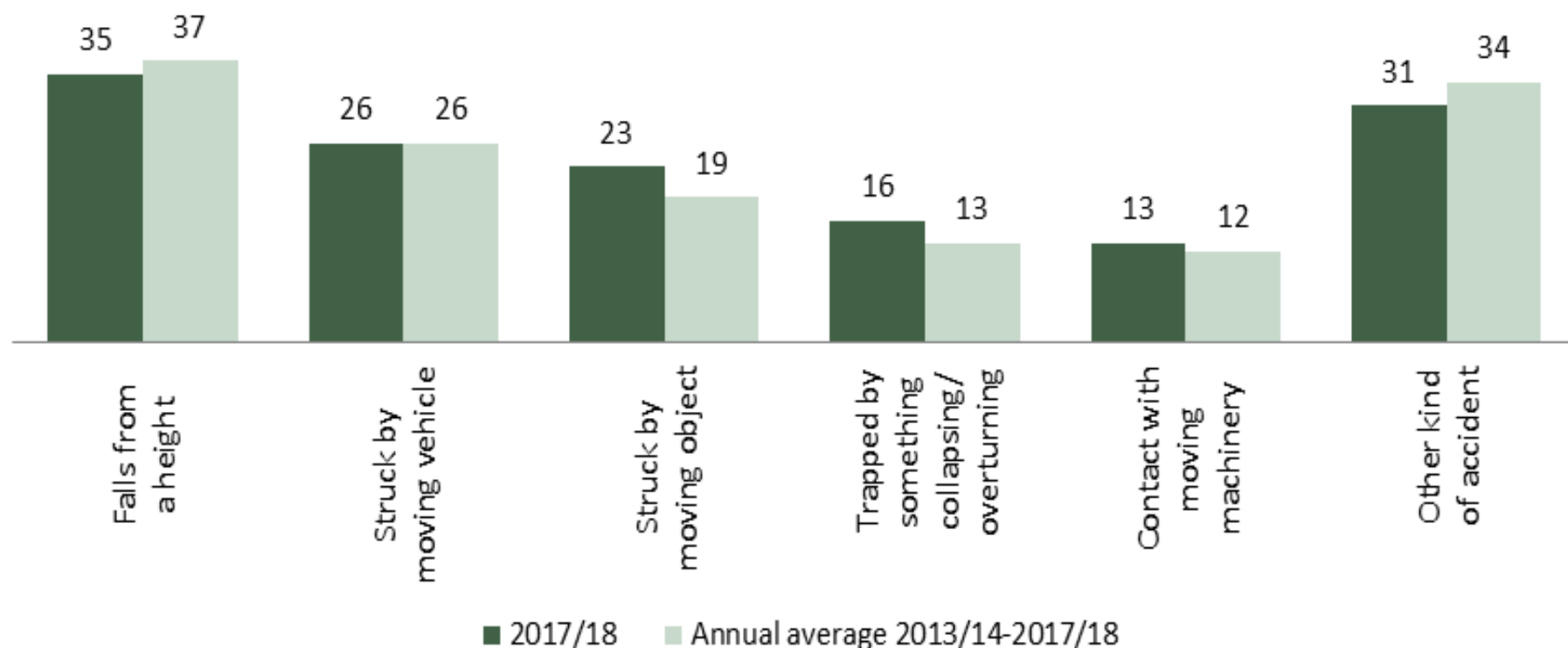
Does your on/off site fire risk assessment reflect the volume of exposed timber frame on site?

Fatality statistics – 2017/18



Construction – the fatality rate, (fatal injury per 100,000 workers), is currently 4 times the standard all industry rate. 144 total fatalities, 38 in construction.

Fatality statistics – 2017/18



Number of struck by vehicle incidents in Scotland a particular concern, not always resulting in fatal injury. Robustness of approaching vehicle training and systems? Thumbs up? How effectively is it being applied on site day to day?

Safety alert – scaffolding access



The screenshot shows the HSE website interface. At the top, there is a navigation bar with the HSE logo and the text 'Health and Safety Executive'. Below this is a search bar and a navigation menu with links for Home, News, Guidance, About you, About HSE, and Contact HSE. There are also links for Accessibility and Text size. The main content area features a breadcrumb trail: HSE » News » Health and safety bulletins » Preventing unauthorised access onto scaffolding and other work platforms. Below the breadcrumb trail are options to rate the page, share, get free updates, bookmark, and follow HSE on Twitter. The main heading is 'Preventing unauthorised access onto scaffolding and other work platforms'. Below the heading is a table with details about the safety alert.

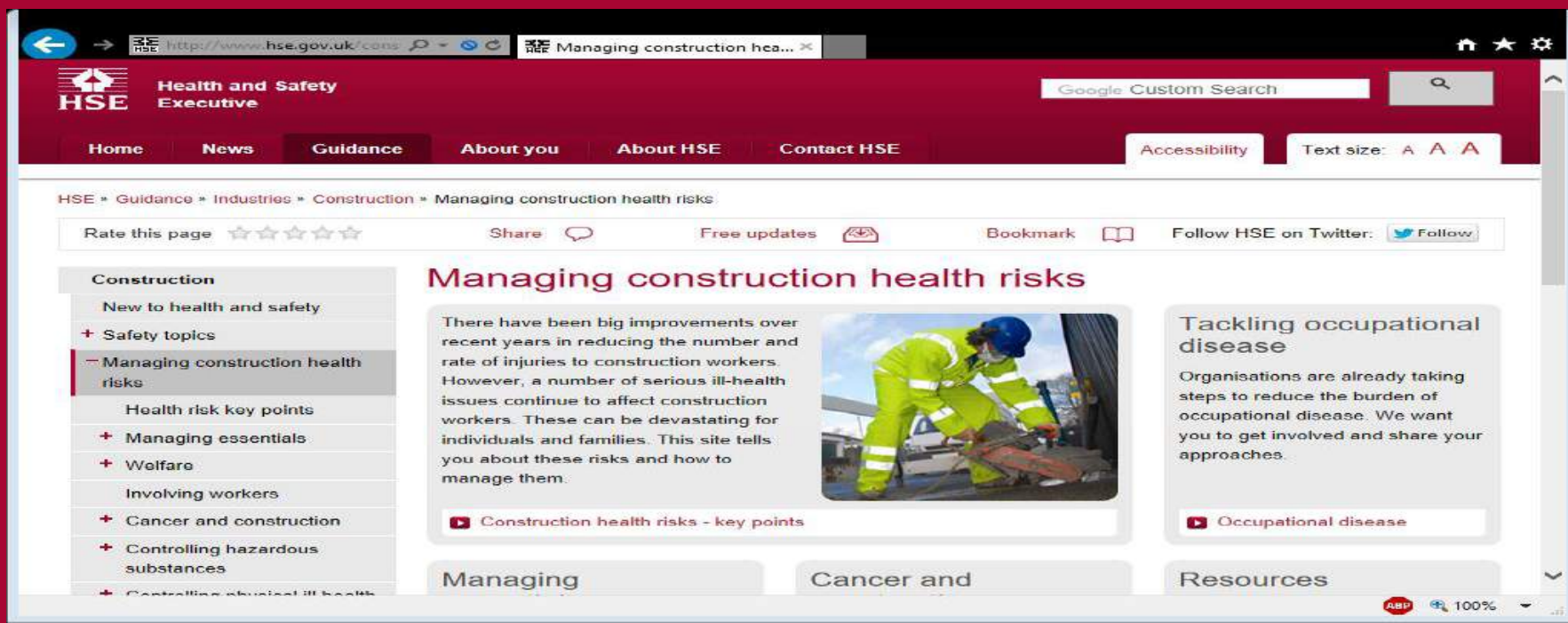
Health and Safety Executive - Safety Alert	
Department Name:	Construction sector
Bulletin No:	CON1 - 2018
Issue Date:	11th July 2018
Target Audience:	Construction industry; scaffolding companies; scaffolding suppliers.
Key Issues:	Security of a construction site including scaffolding and ladders is vital to prevent unauthorised access onto scaffolding or other work platforms. Falls from height from scaffolding or

On the left side of the page, there is a sidebar with 'Health and safety bulletins' and a list of links including 'What are health and safety bulletins?', 'Sign up for email bulletins', 'Sign up for RSS bulletins', 'Recent bulletins', 'Divisional safety bulletins', 'FAQs', and 'Useful links'. Below this is a 'Related content' section with links to 'eBulletin newsletters' and 'News'. On the right side, there is a 'Subscribe - Health and safety bulletins' section with a description and icons for email, RSS, and mobile notifications, along with a link to 'More about subscriptions'.

Residential proximity? Lighting? Out of hours security arrangements? Local contacts? Signage? Previous issues? Contractor access?

HSE health inspection campaign

- Campaign on health risk topics planned for 1st-12th of October.
- Likely to include inspection visits to house build sites.
- Campaign will cover dust control, materials manual handling, HAV exposure controls, COSHH issues with solvents/chemicals.

A screenshot of the HSE website's 'Managing construction health risks' page. The page has a dark blue header with the HSE logo and navigation links. The main content area is white with a blue sidebar on the left. The main heading is 'Managing construction health risks' in blue. Below the heading is a paragraph of text and a video player showing a construction worker in a high-visibility suit. To the right is a section titled 'Tackling occupational disease' with a video player. The bottom of the page has a navigation bar with 'Managing', 'Cancer and', and 'Resources' buttons.

HSE Health and Safety Executive

Home News Guidance About you About HSE Contact HSE Accessibility Text size: A A A

HSE » Guidance » Industries » Construction » Managing construction health risks

Rate this page ☆☆☆☆☆ Share Free updates Bookmark Follow HSE on Twitter: Follow

Managing construction health risks

There have been big improvements over recent years in reducing the number and rate of injuries to construction workers. However, a number of serious ill-health issues continue to affect construction workers. These can be devastating for individuals and families. This site tells you about these risks and how to manage them.

Construction health risks - key points

Tackling occupational disease

Organisations are already taking steps to reduce the burden of occupational disease. We want you to get involved and share your approaches.

Occupational disease

Managing Cancer and Resources

Questions?

