



WAR ON DUST 2023

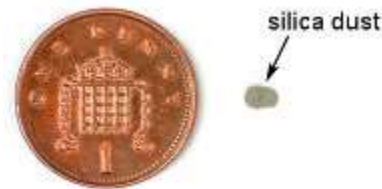


silica

STOP WORKING IN THE DUST CLOUD

What Is Silica?

- Crystalline silica is a common mineral that occurs in many naturally occurring and man-made materials used at construction sites.
- Respirable crystalline silica is very small particles – typically at least 100 times smaller than ordinary sand found on beaches or playgrounds.



The amounts needed to cause this damage are not large. The most you should be inhaling during a day **after using the right controls** is shown next to the penny.



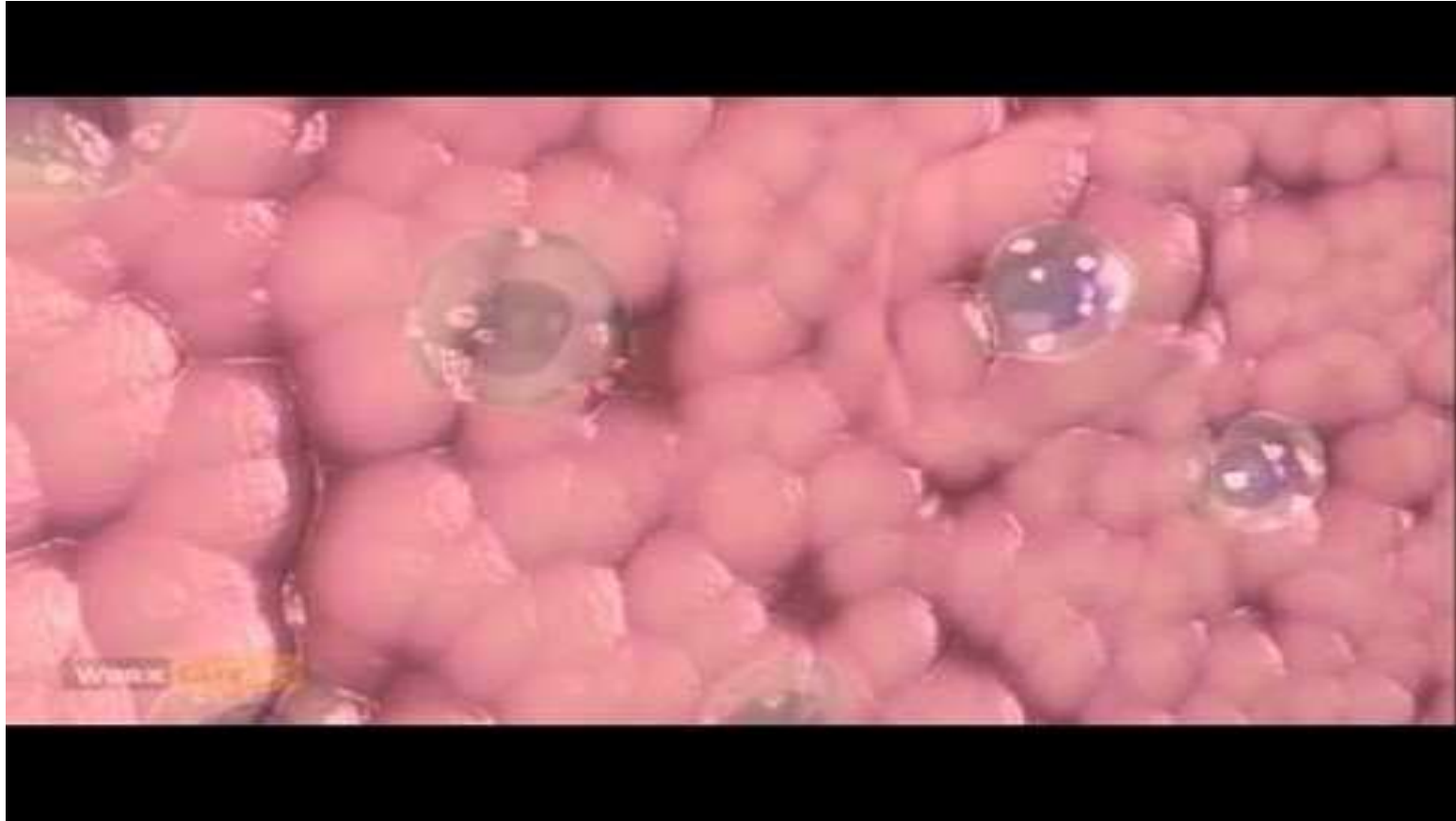


What Is Silica?

- The very small pieces of silica dust get in the air that you breathe and become trapped in your lungs.
- Inhaling very small crystalline silica can be hazardous to your health.



Health Effects of Silica Exposure



What is Silicosis?

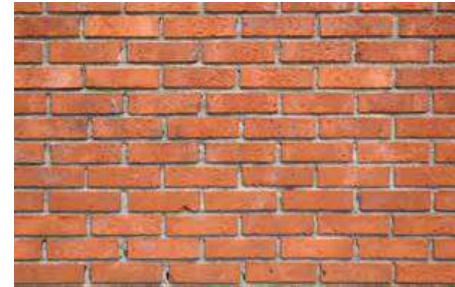
- Silicosis is an irreversible, often disabling and sometimes fatal fibrotic lung disease.
 - Chronic silicosis is the most common type of silicosis and usually occurs after at least 10 years of exposure to respirable crystalline silica.
 - Accelerated silicosis may occur within 5-10 years due to high levels of exposure.
 - Acute silicosis may occur within a few months to less than 2 years due to extremely high levels of exposure.



When Is Exposure Likely?

- Respirable crystalline silica is generated by high-energy operations on:

- Stone
- Rock
- Concrete
- Brick
- Block
- Mortar
- Cement
- Tile



You Could Be at Risk

- Exposure has been found when employees perform one of these tasks:
 - Grinding
 - Crushing
 - Hauling
 - Chipping
 - Hammering
 - Drilling
 - Sawing
 - Blasting
 - Dry sweeping
 - Compressed air
 - Mixing mortar or concrete



Use Engineering Controls

- **Engineering controls:** Employees must use engineering controls for silica exposures above the PPE.
- Those controls must include either:
 - Wet cutting, or
 - Vacuum dust collection system.



Wet Methods

- Full and proper implementation of water controls requires that employees ensure that:
 - An adequate supply of water for dust suppression is used.
 - Flow rates specified by the manufacturer are used.
 - The spray nozzle is working properly to apply water at the point of dust generation.
 - The spray nozzle is not clogged or damaged.
 - All hoses and connections are intact.
 - Water filters are rinsed or replaced often.
 - Water is replaced/changed when it gets gritty or begins to silt up with dust.



Introduction

Your typical run of the mill masonry saw creates a lot of mess and dust. We want to show construction sites throughout country what our products can do, weather it be the Makinex Hose-2-GO or the IQ Dustless Saws.

We have a solution for you!!!



WATER BASED SOLUTION

SIMPLE BUT EFFECTIVE SOLUTIONS



MAKINEX
CONSTRUCTION PRODUCTS

MAKINEX H-2-G

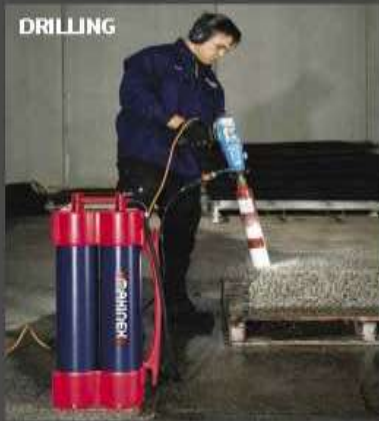
MAKINEX
CONSTRUCTION PRODUCTS

Visit makinex.com.au for video

NEW
TECHNOLOGY

HOSE 2 GO

A constant pressure water supply unit ideal for the hire and rental industry as a dust suppression tool and portable water supply.



The **Hose 2 Go** has a constant flow of water that allows you to suppress the dust when cutting, core drilling and grinding concrete. It's different to every other product on the market because it provides a constant water flow without the use of a pump, battery or electronics.

An easy to use dust suppression tool and portable water supply, which has a handle with two easy carrying positions.

SIMPLE TO USE

- ✓ No pump which means greater reliability
- ✓ No complicated electrics to breakdown
- ✓ No battery to go flat and expensive replacements
- ✓ No need to manually pump to get the water pressure you need
- ✓ 13.8 litre capacity and up to 30 minutes of constant flowing water
- ✓ The **Hose 2 Go** is Australian designed



The most innovative product to hit the hire and rental industry for a long time.

W M Donald

- Multiquip spent time at their site during the Apprenticeship day, showing the capabilities and features of the hose2go with a demonstration.



SMC Building and Civils, Falkirk

- Purchase of their first Hose2go following successful demonstration



MAKINEX HOSE-2-GO

JOB CHALLENGE

- Getting constant flow of water
- Tying up valuable Labour
- Greater dust suppression
- Limited water availability
- Running out of Battery
- Use of Dirty Water Clogging tools.

JOB SOLUTIONS

- No pump. Greater reliability
- No manual pumping
- On the job dust suppression
- Up to 30 mins constant flow
- No complicated electrics
- Clean Water direct from the tap



Taylor Construction

- Hose2go demonstration at Taylor Wimpey site in Edinburgh



Algo (Perth)

- Hose2go demonstration at their site in Kirkcaldy, Fife



Advance Construction

- Demonstration of the hose2go at their site in Kirkcaldy, Fife.



MAKINEX HOSE-2-GO

- The Makinex Hose2go comes with hose fittings and quick connector to connect to an outside tap or stand pipe.
- This allows the membrane inside to fill up with clean water, which takes roughly 60 seconds. Think of the membrane as a balloon as its filled, it expands.
- The membrane will hold 13.8 litres of water, weighing at 19.5kg.
- The Hose2go comes with a spray gun and shoulder harness to manoeuvre around site.
- Once full, this can be disconnected. Now the user has a pressurized dust suppression bottle ready to use.
- When connected to their cut off saw, this allows the user up to 30 minutes of continuous water at 7-10psi.
- Water will only flow through the 3 meter hose to the cut off saw when the shut off cock is turned to the on position, otherwise the bottle stays pressurized.
- The benefits are; One user, one saw and one bottle. No second user required to pump, electricity or batteries required. Less dust on site and a more productive day.



Algo (Perth)

- Hose2go demonstration



Ogilvie Construction

- Successful demonstration at their Glasgow site in George Street



MAKINEX HOSE2GO – RECENT SUCCESS

- Mulholland Contractors – After the successful demonstration and trial period with their H&S Manager Graham McCarroll at their site in Hamilton, we received an order of 60 units to be implemented across the company. Many thanks to Graham for his time, efforts and help us achieving this. Thank you very much.
- Ogilvie Construction – A successful demonstration with Jeff Wearing on their site in George Street, Glasgow resulted in 2 new units being purchased. With the aim of more business to come. Thank you.
- Red Stag Materials – Our supplier in the North East of Scotland have been successfully purchasing the units from us since last year, with purchases of over 100 units per order. To keep up with customer demand.
- W M Donald - Have recently purchased 20 units through Red Stag Materials and will look to distribute across the business once they have received successful feedback.
- Social Media – Such a powerful tool as our disposal. Through LinkedIn, Facebook and Instagram posts of videos, this has allowed us to grow the numbers on a daily, weekly and monthly basis. On average last year we were 78 units per month, this year so far we are 120 units per month and this is continuing to grow.





No Water, No Dust, No Problem

- IQ Power Saws require no water to cut.
- This is a dry cut solution that eliminates the need for water, plastic drops and timely setups.
- The IQ saws utilize a powerful cyclonic vacuum system to absorb 99.5% of dust created.
- When you finish your job, there is no lengthy clean ups.



- Every IQ saw is built with integrated dust collection technology, which allows the user to cut inside or outside with no water or dust.
- As the user cuts, the blade design and guard creates a downdraft for the dust through the louvred table, down the cyclones and into the dust containment system.
- Their blades have a cooling technology, keeping the blade cool after every cut.
- Each saw is fitted with a filter, which cleans itself by turning the cleaning handle every 30-60 minutes allowing excess dust into the containment system below it.
- The 360XT, 362I and 244 saws are easily transportable around site with wheels and transport handle.
- The vacuum system is a high output system which the saw starts automatically, controlling dust.



IQ244 Waterless Tile Saw

- Available in 110v and 240v
- Weighs 42kg
- 10 inch dry cut tile saw designed for professional contractors
- Uses traffic light system to ensure proper use from user
- Fully integrated dust collection technology
- Cut tiles inside and outside
- Set up inside close to the job without the worry of creating any mess
- Vacuum system combined with cyclone technology has been tested and captures over 99.5% of dust.
- Three stage filtration system helps collect particles and the quick spin filter for easy cleaning.
- Portable with a removable dust containment tray
- Also comes with X stand
- Can cut up to 20mm porcelain slab





POWER TOOLS™

No Dust. No Water. No Problem.

IQ360XT Dry Cut Masonry Saw c/w Rolling Table

- Available 110v and 240v
- Weighs 30kg
- 355mm Dry Cut blade
- Portable cart with wheels available, to manoeuvre around
- Fully integrated dust collection technology
- Can be used indoors and outdoors
- Cut capacity with table is 95 x 305mm to cut brick, stone and pavers
- Can be used without table, approx. 4 ½ inch depth of cut
- Easy to maintain and clean
- Quick spin filter at front of saw – every 30 minutes
- Bottom of saw unit unclips, where dust is captured
- Responsible use: 50 meters per 8-hour working day





An example of the 360XT 110v saw cutting brick on site

- Notice how the dust is pushed down into the containment system, as the blade cuts the brick.
- Transport cart can be used to hold saw within its unit or above, for working height. As seen in the video.
- Simply plug in and cut, turn the filter button every 30 minutes.
- Empty containment system when full, repeat process.
- Once finished the job, unplug and rush down saw ready for next day use.



POWER TOOLS™

No Dust. No Water. No Problem.

IQ362 Dry Cut Masonry Saw

- Available 240v
- Weighs 68kg
- 420mm dry cut masonry saw
- 150mm depth of cut
- Choice for masonry and hardscape professionals
- Unmatched speed and accuracy, versatile in material cutting
- Cuts up to 40% faster than any competitor in its class
- Cuts wide range of masonry materials
- Soft start technology controls input power ramp up for smooth, uninterrupted operation
- High floatation tired allow one person to easily move over rough terrain
- Dust is captures with blade guard, rear dust guard and downdraft louverd table
- Integrated vacuum system
- Captures heavy debris, fine particles and superfine particles, 99.5% dust capture from cut
- Dust collection chamber holds 18kg of dust





IQ228 CYCLONE

- Available 240v
- Weighs 16kg
- Worlds first 7 inch dry cut table top tile saw
- Designed for professional contractors to eliminate the problems with cutting wet
- TRU-CUT System is an integrated measurement system that provides consistent and accurate cuts for any job
- TRU-CUT System includes; Fence, IQ Micro Fence and Pre-measured Rolling Table
- The IQ Micro Fence allows you to dial in the exact measurement for your cut. Lock it into the table and adjust the fence to the precise cut you need.



An example of the IQ362 Block saw in use on customer site

- Has the ability to cut more than one brick at a time
- With every saw you will notice the dust being pushed down through the louvre system on the table, down through the cyclones into the containment system
- Traffic light system for optimal use, user knows they are cutting properly allowing blade to do the cut
- Built in RCD below switch buttons for safety
- Filtration system located on opposite side, required to be turned every 60 minutes



MKM Building Supplies

- Open day with IQ Power Tools demonstrations of the block saws 360XT and 362I



Project Conclusion & Proposal

- The Makinex Hose2go is a simple and effective solution for your business and construction sites in Scotland and throughout the UK.
- This product will benefit you in the long run, for your business and health.
- Our aim is to implement the Makinex hose2go into every construction site in the country, providing a safer environment to work in.
- We hope to pass on what we have learned so other businesses can benefit from using the hose2go in the future.
- The IQ Saws are unique in their own way, providing a waterless and dustless solution versus water based saws.
- They are portable and have the ability for the user to work indoors, this is a game changer when dealing with all the different aspects of weather we encounter in Scotland.
- We want to achieve the same principles with the saws as we have with the hose2go, making more work sites safer to work in with a lot less dust.

Thank you for your valued time today.

**QUESTION
TIME**



Facts those exposed might not know...

- Over 5 Million workers are exposed to silica each year
- 1,000,000 are at high risk of developing Silicosis
- As many as 14,300 new cases of Silicosis each year
- 250-300 deaths per year

Silica dust is one of the world's most significant causes of occupational disease