

Oxford Safety Components

Your Perfect Safety Partner



Oxford Safety
Components



Working with House Builders since 2004...



Working with House Builders since 2004...



On July 6th, the Health and Safety Executive (HSE) released its sobering "Work-related Fatal Injuries in Great Britain, 2023" report.

The grim reality stood stark: 135 lives were tragically lost due to work-related accidents in the 2022/23 period in Great Britain, with the construction sector bearing a heavy burden of 45 fatalities. Even more distressing, 89% of these construction-related deaths resulted from falls from a height.

- Two construction companies have been fined £46,000 in total after a labourer from Runcorn fractured his skull falling down a stairwell.
- The victim had been working on a new build house when he fell through a stairwell on 3 March 2021.

SAVING LIVES EVERY DAY

INNOVATIVE PATENTED SAFETY SOLUTIONS

Oxford Safety
Components



SAVE LIVES



SAVE TIME



VISIBILITY



TRAINING

Certified Training

- Employers have a duty of care to ensure that operatives are capable of using the equipment needed to carry out their work.
- An Oxford Safety Components Training Officer will provide comprehensive, certificated training for up to eight people in the safe use of the equipment, at one of our national training centres.
- Oxford Safety Components training is only undertaken through us and any company other than OSC is offering this service without our consent and support.



Certified Training Officers



On-Site Training



Training For Up To 8
People



CoverSafe
With XSpan Technology



- **Lightweight** roof safety matting, formulated with aluminium to create a strong fall prevention system when spreading roof trusses.
- **Easy to use** – can be installed by only 1 operative.
- **Quick to erect** – deployed and ready to use in 20 minutes.
- **Adaptable** – can be adjusted to many different widths and lengths.
- **BS.8630:2019 Conformity.**

Open size: 3.6m x 0.7m, covers 2.52m²

Closed size: 0.75m x 0.98m

Maximum spread load: 150kg

Sectors

All new build construction companies, all companies involved in refurbishment and associations, carpentry companies, demolition, housing, timber frame construction, and decorating companies.

Benefits

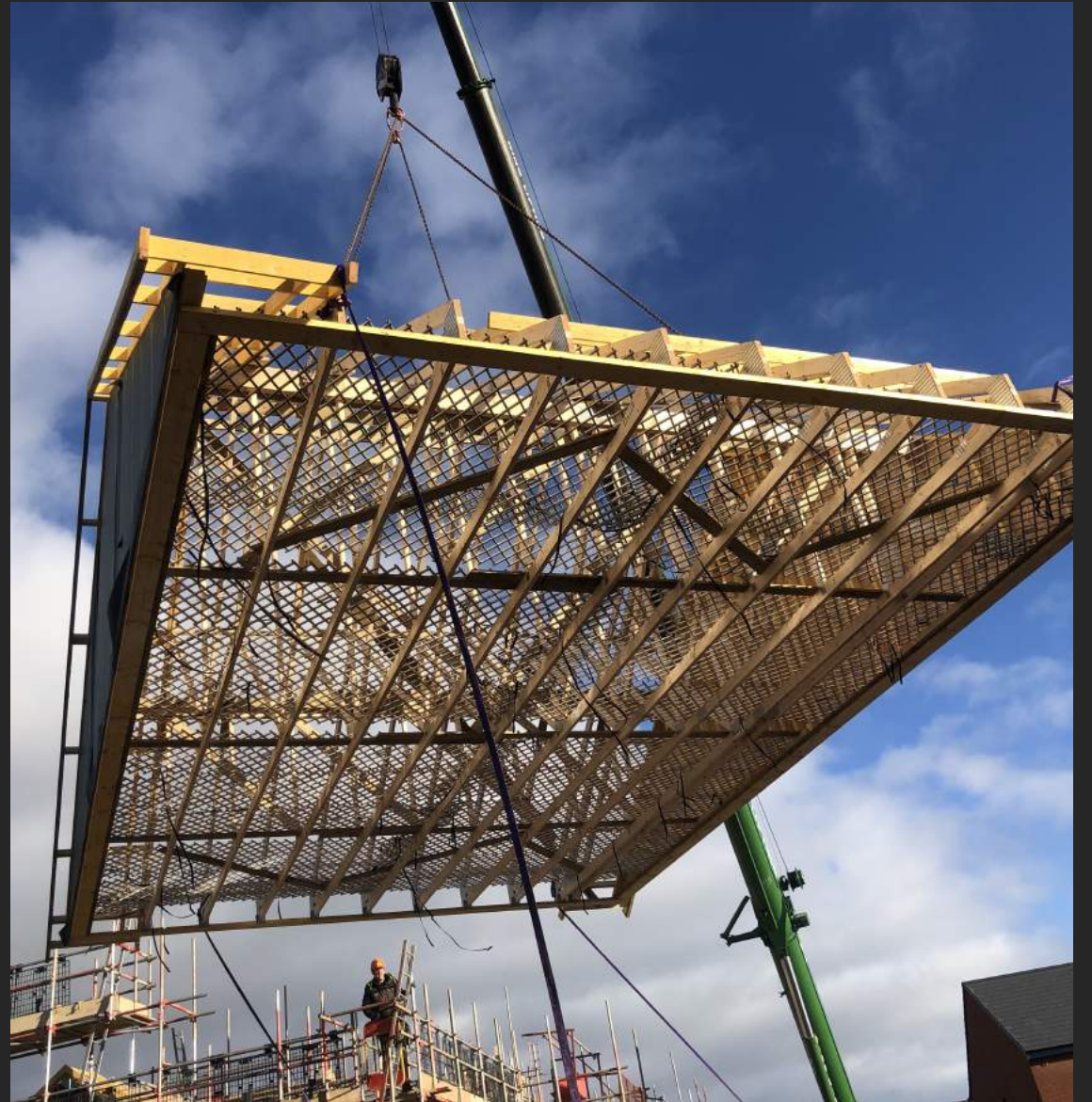
- Increases Health & Safety and productivity
- Quickly & easily installed
- Allow easy access for movement of people & materials
- Provides a temporary work platform and fall prevention system
- After use, the mats are easily folded up and readily removed

Application

For any workers erecting truss roofs, felt and battening, roof tiling or any performing remedial tasks.



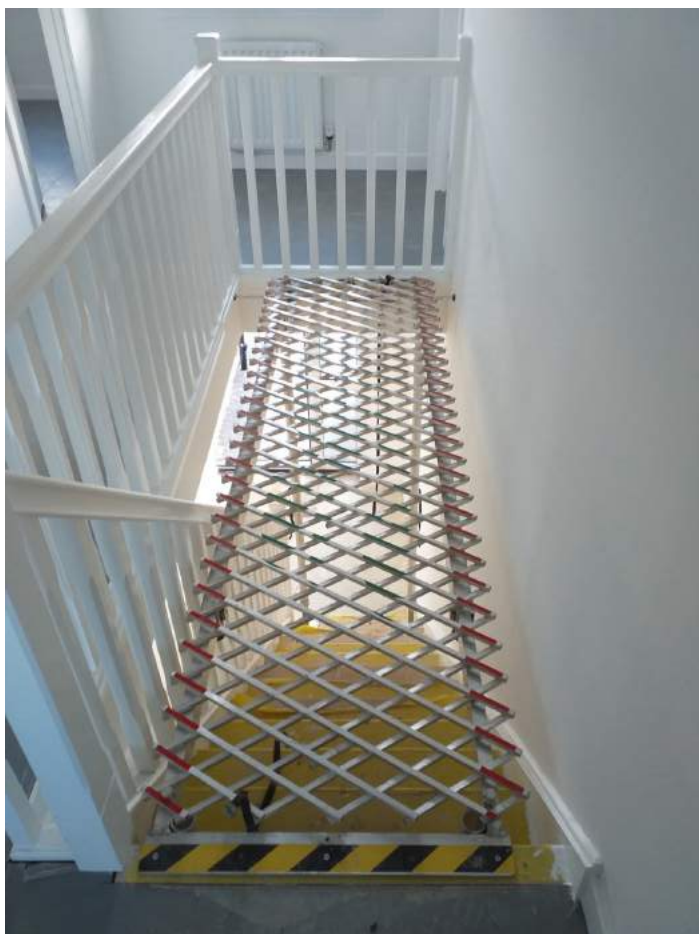
Timber Frame House Builds



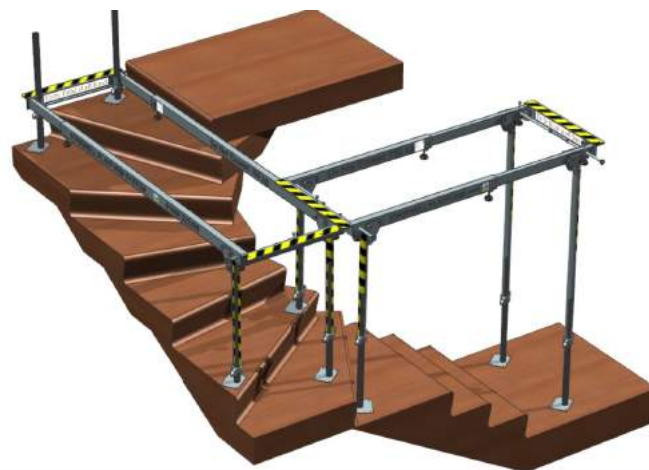


StairSpan

With XSpan Technology



- **Sturdy** stairwell protection system to prevents falls into stairwells, voids, and down stairways.
- **Easy to use** – can be installed by only 1 operative.
- **Quick to erect** – ready to use in 10 minutes.
- **Adaptable** – telescopic frame can be adjusted to many different lengths.
- **BS.8630:2019 Conformity.**



Compact frame adjusts from: 1.4m to 1.9m

Weight: 18kg

Standard frame adjusts from: 2.1m to 3m

Weight: 24kg

Maximum spread load of both systems: 225kg

Sectors

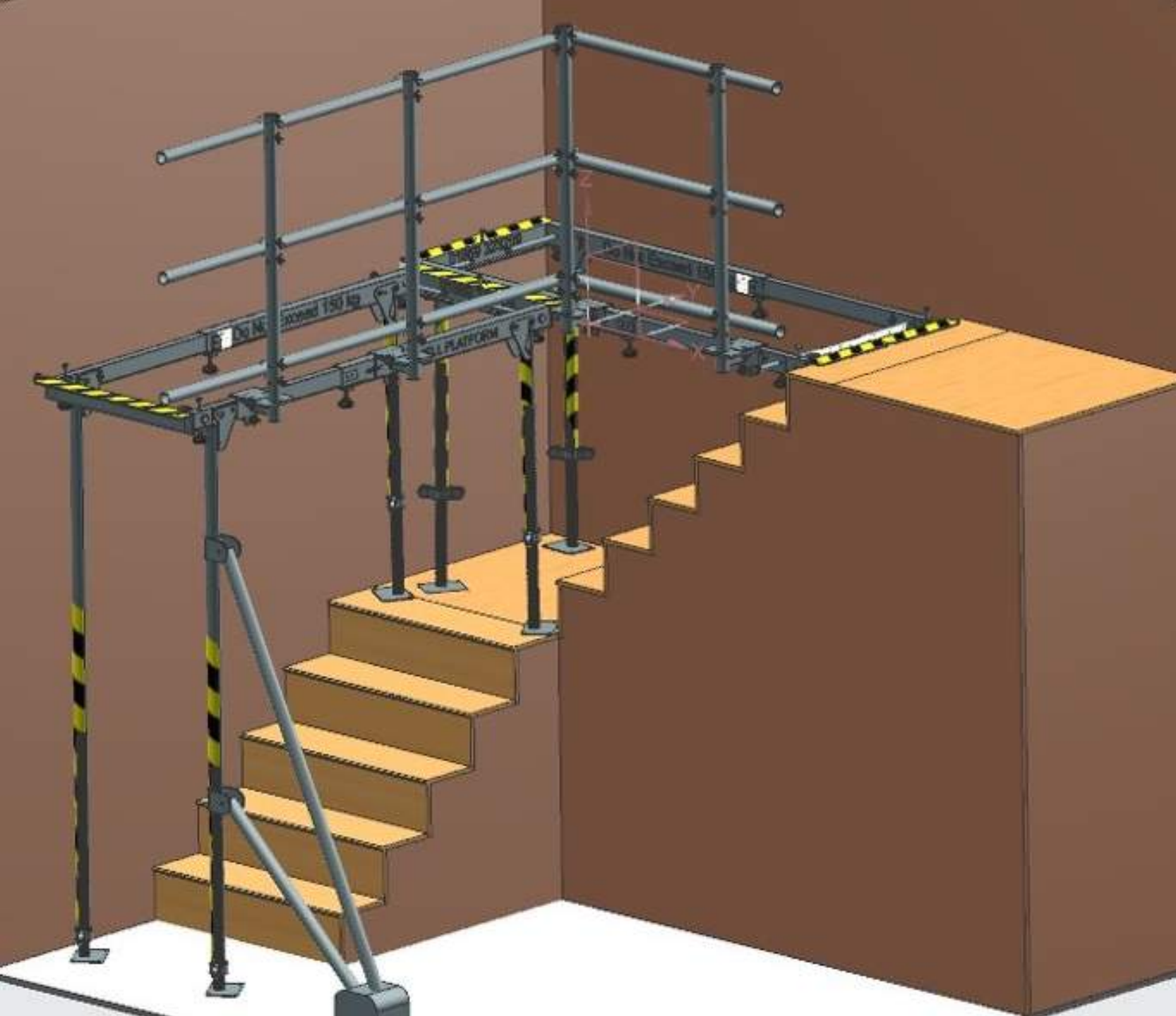
All new build construction companies, all companies involved in refurbishment and associations, carpentry companies, demolition, housing associations, plastering and decorating companies.

Benefits

- Increases Health & Safety and productivity
- Quickly & easily installed
- Allow easy access for movement of people & materials
- Provides a temporary work platform and fall prevention system

Application

Domestic stairs and stairwells during construction or refurbishment for all trades involved in this dangerous and awkward area.



So what about before the staircase is installed?



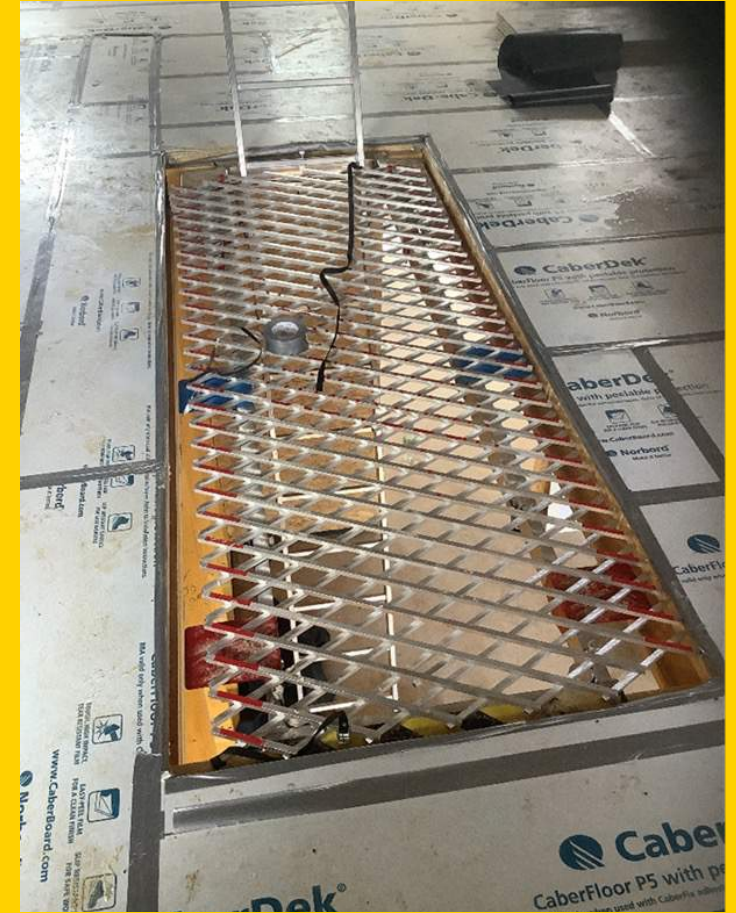
StairSpan Bridge



Stairwell Void
Fully Protected



Visibility Above
& Below



Full Access via
Ladder



- Increased Site Safety.
- Working Platform – 225kgs MSL
- Full Access from inside property.
- Less wastage in terms of wooden cassettes.
- Repeated use.
- Flexible / Telescopic size options.
- Covert to StairSpan after use.



CoverSafe Spark



- **Lightweight** working platform used to prevent falls through ceilings.
- **Formulated with GRP** - prevents shocks from faulty or broken electrical fittings or old wiring, possibly hidden in thermal insulation.
- **Highly adaptable** – can be expanded to many different sizes.
- **BS.8630:2019 Conformity.**



Open size: 2m x 0.8m, covers 1.6m²

Closed size: 1.15m x 0.48m

Weight: 10kg

Maximum spread load: 150kg

Sectors

All new build construction companies, all companies involved in refurbishment and associations, pest control, maintenance, air conditioning, plumbers, insulation companies, demolition, housing associations, plastering and decorating companies.

Benefits

- Increases Health & Safety and productivity
- Easily installed
- Allows easy access for movement of people & materials
- Provides a temporary platform to avoid the hazards of working in an attic or roof space

Application

- All roof and attic operations, open joists or voids up to 900mm.

With you throughout the build

Roof

First Floor

Staircase

Services

CoverSafe

**StairSpan
Bridge**

StairSpan

**CoverSafe
Spark**



Taylor
Wimpey



Bellway

BLOOR HOMES[®]

Miller
homes



Vistry Group



CALA
HOMES



cruden^{HOMES}

AVANT
homes

Oxford Safety Components

Your Perfect Safety Partner

Steve Rabone

General Manager

07341 864922

Steve.Rabone@oxfordsafety.com

Fraz Rees

Business Development Manager

07827 848380

Fraz.rees@oxfordsafety.com



Oxford Safety
Components