



Making a big noise  
about **fire safety on**  
**construction sites.**

# Hello to Howler!

---



## Experience

Decades of experience working on **high-complexity, high-risk** projects.



## Human-Centric

We don't just sell boxes. We build **relationships** and design systems that work for the people on the ground.



## Compliance First Mindset

Accredited CPD providers and **thought leaders** in temporary fire safety for complex construction environments.





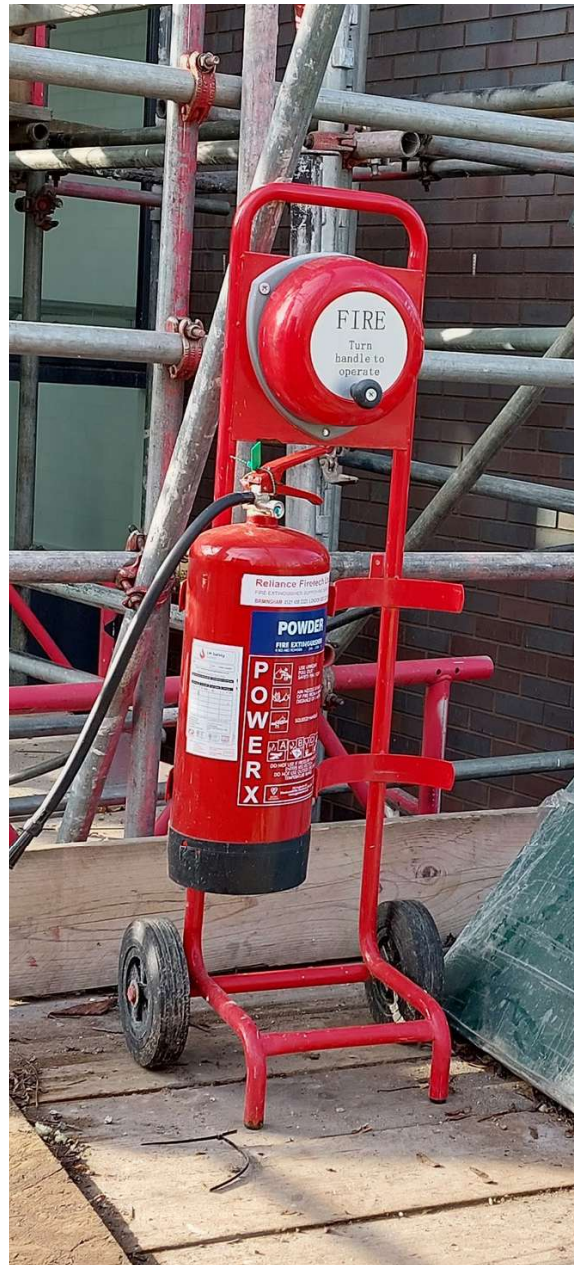


2

## THE CHALLENGE

► It's complicated





► **Culture** can put **cost** ahead of **compliance**

- ▶ But it's **too costly** to get it wrong



# Focus: Managing Fire Risks in Timber Frame

80%

of new homes in Scotland are Timber Frame

Fire is the **#1 cause of insurance claims** across the construction industry.

The "Vulnerability Window" is largest before final cladding and compartmentation are in place.



Timber Frame Other

Source: Structural Timber Association (STA)

HARD-HITTING QUESTION #1

**It's 2 AM on a Tuesday. Your timber  
frame site is empty.**

**How long until someone knows  
there's a fire?**

HARD-HITTING QUESTION #2

Are you buying a fire alarm as a  
procurement line item,  
or as a **critical business risk mitigation  
strategy?**

HARD-HITTING QUESTION #3

When the insurance auditor asks for your JCoP compliance evidence, do you have a **robust audit trail**, or just a pile of paper?

# Compliance: The 16 Steps and the JCoP



## STA 16 Steps to Fire Safety

- ✓ Specific to **Timber Frame** projects.
- ✓ Endorsed by HSE and CIREG.
- ✓ Covers design, tender, and construction phases.
- ✓ Step 9: fire detection and warning systems.



## JCoP 10th Edition (v10.2)

- ✓ The "Gold Standard" for site fire prevention.
- ✓ Critical for **Insurance Validity**.
- ✓ Section 24: Specific rules for large timber structures.
- ✓ Requires automatic detection in enclosed spaces.

**⚠ Non-compliance can lead to insurance withdrawal and legal liability.**

# Fire Alarms: Basics



## Electronic > Manual

Electronic alarms are mandatory to ensure rapid, site-wide alerting before a fire becomes life-threatening.



## Wireless Integrity

Continuous, uninterrupted signals are critical. Wireless mesh ensures no "dead spots" as the build progresses.



## Audibility

Must be clearly audible above background construction noise in all work areas.



## Sounders & Strobes

Combined audible and visual alerting for maximum effectiveness in high-noise environments.

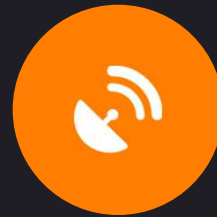
**"You can't fit and forget: Weekly testing and periodic servicing are mandatory."**

# Fire Detection & ARC Monitoring



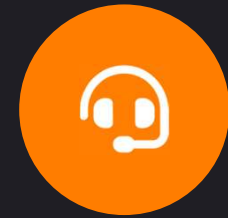
## Detection

Automatic sensors in enclosed spaces



## Transmission

Secure wireless signal to hub



## ARC Link

24/7 Monitoring & Emergency Dispatch

✓ **Risk-Assessed:** Detection extended as building progresses, covering all high-risk areas.

✓ **False Alarm Control:** Careful selection and management to prevent disruptive false alerts.

# How We Partner With You: Design to Completion



## 1. Budgeting

Early engagement to ensure fire safety is correctly costed from the start.



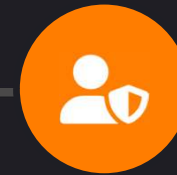
## 2. Design

Site-specific system design tailored to your timber frame project's unique risks.



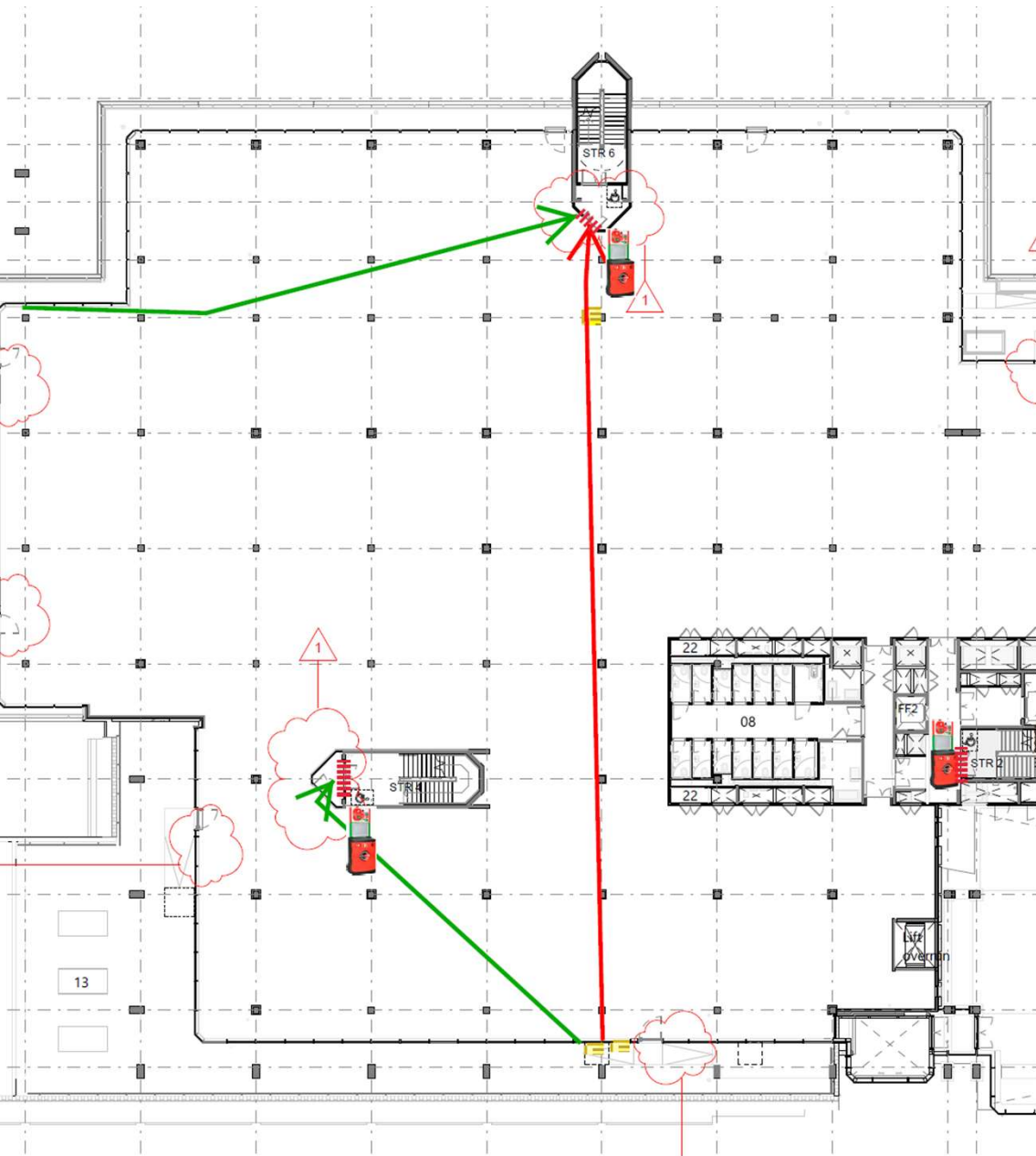
## 3. Deployment

Rapid, wireless installation that scales as your build progresses.



## 4. Support

Ongoing maintenance, testing, and compliance documentation support.



► **Accurate & early budgeting**

► **Agreed design  
and specification**



► **ProHire - Flexible, efficient and fast**





4

# PRODUCT OVERVIEW

► **Prolink** because  
life-safety  
requires **the best**





► **SafetyHub**  
Safer, Simpler  
& Sustainable



# Conclusion: Don't Wait for a "Near Miss"

- ✓ Times & technology are changing – **is your fire safety system sufficient?**
- ✓ Compliance can be critical for **insurance validity.**
- ✓ Timber frame projects are likely to require **detection as part of a linked fire alarm system**
- ✓ Howler are here to **help.** It's what we do

