

# EXPECT **MORE** SAFETY FROM YOUR TELEHANDLER

Philip Boddy

Global Telehandler Product Director



# SANY GROUP

**SANY**

## FACTS & FIGURES

**1989**

FOUNDATION IN CHINA

**> 100**

BRANCH OFFICES

**17 GBP**

TURNOVER IN 2025

**50,000**

EMPLOYEES

**79**

PRODUCT

**25**

MANUFACTURE BASES

**#3**

CONSTRUCTION MACHINERY  
MANUFACTURERS WORLDWIDE

**#1**

CONCRETE PROCESSING  
MACHINES WORLDWIDE

**#1**

CONSTRUCTION MACHINERY  
MANUFACTURERS IN CHINA



# SANY UK & IRELAND



## FACTS & FIGURES

**Y2020**

COATBRIDGE DEPOT OPENS

**>5M GBP**

SPARE PARTS

**>80**

UK BASED EMPLOYEES

**>11**

DEALERS IN UK & IRELAND

**>6000**

TOTAL UNITS SOLD

**>5%**

MARKET SHARE



# SANY EUROPEAN CONSTRUCTION TELEHANDLER RANGE



## Currently, 5 base models:

- Lift heights ranging from 6–18 meters
- Lift capacities from 2,500kg – 4,200kg
- 6-meter models in diesel and full electric
- All CE & UKCA Certified
- Full road homologation

### European TH Product Range

Model		
Compact: <b>6m</b>		CON 
Mid range: <b>7m</b>		CON 
Mid range: <b>9m</b>		CON 
Large range: <b>14m</b>		CON 
Large range: <b>18m</b>		CON 



## Safety, Productivity, TCO and Easy Care



### EU Design

- Low Boom
- High visibility
- High Comfort

### High Safety

- Load control system
- ROPS & FOPS certified
- 360° AI camera system
- TPMS

### High Efficiency

- Stage V Duetz 3.6 TD engine
- Electrical power (625e)
- 80kW option 1440/1840

### High Durability

- Boom fully tested 40,000 cycles
- Proven European components
- 1 piece fully welded chassis

### High Drivability

- Hydrostatic transmission
- Three steering modes
- Great maneuverability

### High Uptime

- Easy service access
- EVI Telematics
- 500hrs intervals

# SANY TELEHANDLER INNOVATIONS

**SANY**

Group standard Telematics system adopted for all Telehandlers



AI 360 Camera technology developed coupled with the ability to record and store data via EVI cloud based storage



Driver Safety System (DSS) Reports, smoking, phone abuse, Fatigue, Distraction, No Driver & Camera Obstruction

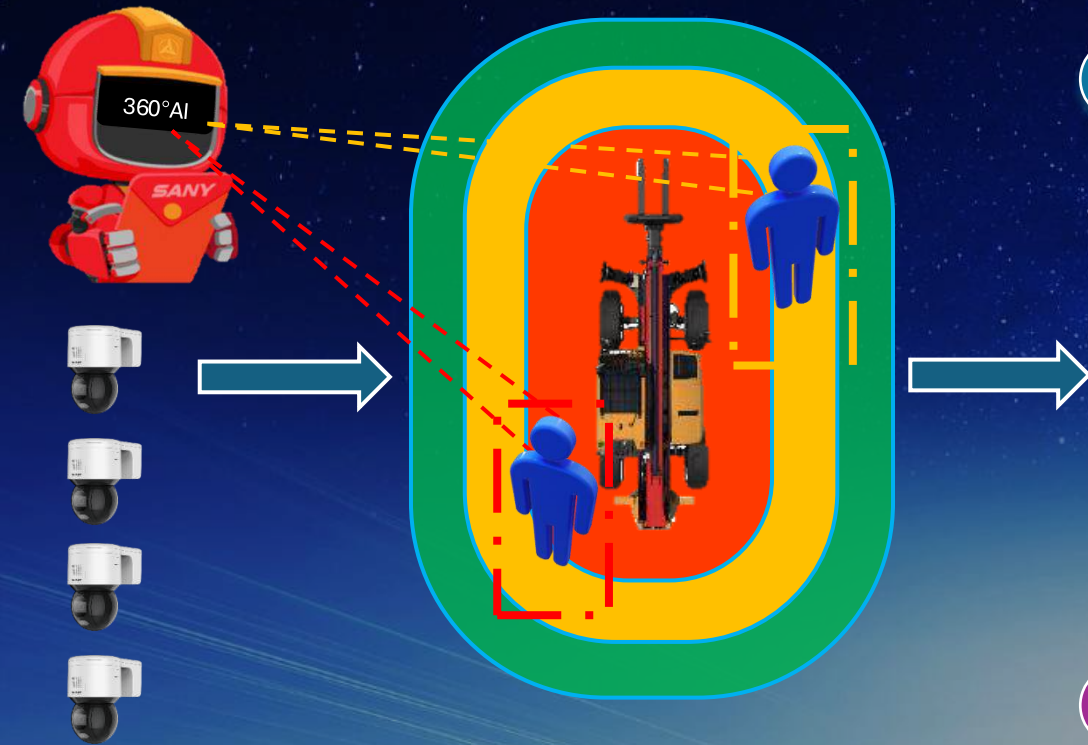


Tyre Pressure Monitoring System (TPMS) Integrated into display and Sany EVI telematics



# SANY TELEHANDLER: 360° AI CAMERA WITH HFR, DSS

**SANY**



## Pedestrian Recognition System & 360° Panoramic view



## DSS (Driver Safety System)



**360° AI Human Form Recognition for improved blind spot pedestrian monitoring**

AI tracking, camera will track pedestrians and automatically switches cameras on screen

Safety Zones Divided into high and medium danger zones with audio voice alerts through cabin speakers

**DSS Alarm reports:**  
Smoking, Phone abuse, Fatigue, Distraction, No Driver, Camera Obstruction

All data is cloud based storage via Sany EVI telematics system

# SANY TELEHANDLER: 360° CAMERA WITH AI HFR

**SANY**



# SANY TELEHANDLER: DSS - SUPPORTING OPERATORS

**SANY**



# SANY TELEHANDLER: TYRE PRESSURE MONITORING SYSTEM

**SANY**



**SANY's Tyre Pressure Monitoring System (TPMS) is designed specifically for telehandlers with Real-time tyre pressure monitoring.**

**knowing a flat or under-inflated tyre can contribute to the telehandler's instability, posing serious risks to safety especially when lifting to height.**



# SANY TELEHANDLER: TYRE PRESSURE MONITORING SYSTEM



- Easy daily checks with system fully integrated into the display screen showing pressures and temperature
- In just 5 seconds, an audible and visual alarm alerts the operator to any leaks or punctures
- All TPMS alerts are also linked to the EVI telematics system to improve safety and uptime
- Sany's integrated TPMS module has a battery life of up to 5 years

# SANY SAFETY & SERCURITY

**SANY**

## Hose Burst Check Valves

Protects the operator and bystanders in the event of hose failure.

## Speed interlocks

- Boom above 35° speed is limited to 15kph until booms lowered
- Carriage load detected speed limited to 15kph for safety
- Speeds can be limited by dealer to 20kph, 25kph

## Seat Safety Switch

Disables FNR if the operator isn't seated. This is also coupled to a green beacon to display the seat belt is being used to display to site management and co-workers.

## Chassis Levelling

Enables the operator to make their machines absolutely level before commencing lifting.

## Fast Tie Down & Lifting Points

Large tie down and lifting points have been incorporated into all Sany telehandlers to make moving machines safe, easy and fast.



# SANY SAFETY & SERCURITY

**SANY**

## Hydraulic Fork Positioners

This helps eliminate risk of operators having to leave the cabin to adjust the forks and improves efficiency and site safety

## Load Control System

Load management system, monitors the load to prevent instability allowing for a safer and more stable load placement. Also links to limit speeding with while carrying loads

## Cabin Protection

ROPS and FOPS certified cabin frame for maximum operator protection, additional screen and roof guards standardised

## Air Conditioning

Standardised over all models, this helps the operator focus and removes the need to open the top door

## Immobiliser

Built into the screen select your pin and enter to unlock the machine, improved security and stops untrained operation.

## 360° AI Camera System

Alerts the operator of pedestrians within the machines working area and will track and change cameras, safety alert clips recorded to help improve site safety



# SAFE DAY OR NIGHT

**SANY**



## Road ready

LED road lights front, and rear ensure you can see the road and other vehicles can see you

## 7 x LED Working Lights

Visibility night or day is increased with LED work lights, 3 front & 2 rear of the cabin and 2 on the boom front ensuring the operator can see site dangers and importantly any co-workers



## Light your working space

Two LED Roof liner lights with multiple lighting levels

# UNRIVALLED VISIBILITY

**SANY**



## Safety Safety Safety

All Sany Telehandlers fitted with integrated reversing camera, distance radar and alarm as standard. So, boom up or down everything's visible.



**Safer By Design**  
Maximising forward visibility with a low front dash and large forward screen while keeping A-post slim to increase operator's fields of vision

**Over The Engine**  
The engine covers not just to look good, designed to fall away to maximise visibility to the offside of the machine.

**Visibility To Every Corner**  
Designing the boom to sit low in the chassis ensures the maximum visibility all around the machine. Meaning the operator can see obstacles and most importantly other site works.

# GROUNDLEVEL DAILY CHECKS

**SANY**

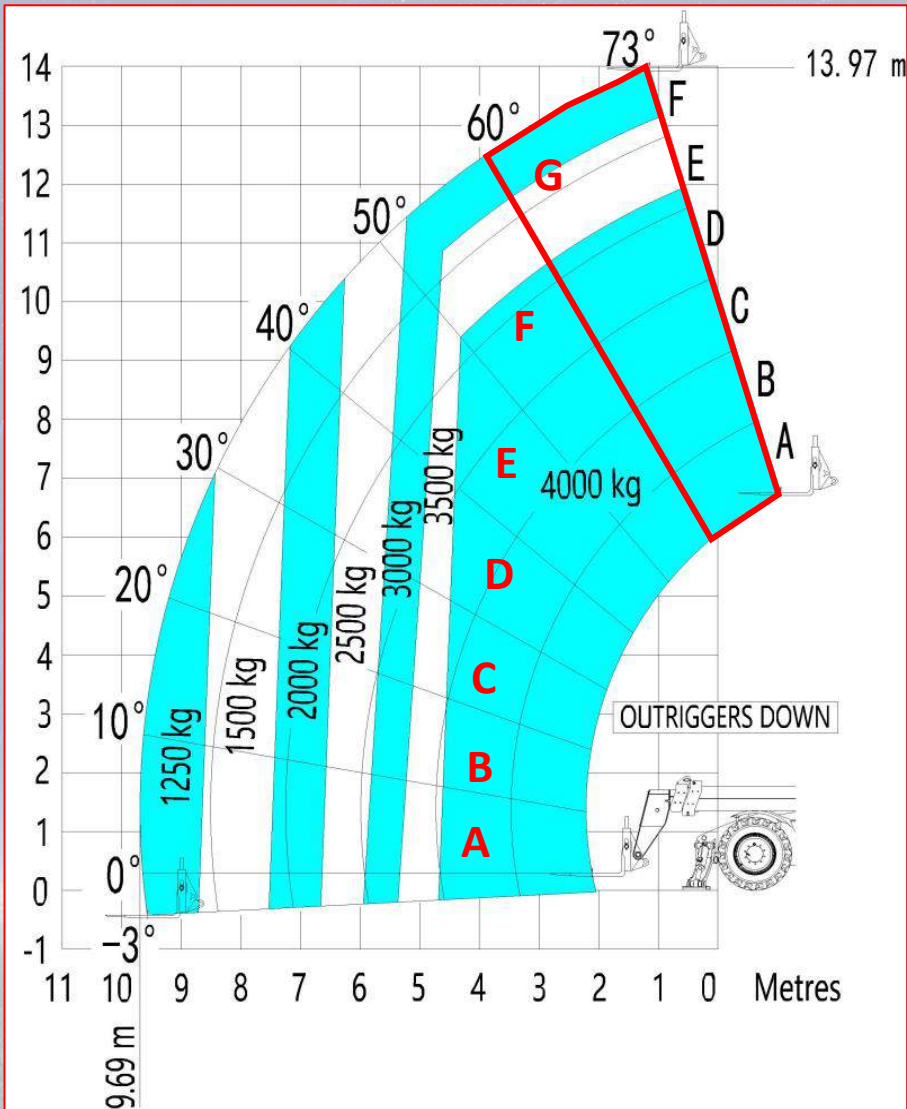


**Ground Level Daily Checks**  
Allowing daily checks to be carried out at ground level eliminates the risk of operator slips and trips.



# SANY SAFETY SYSTEM: OPERATIONAL INTERLOCKS

**SANY**



## Park Brake

- **Applied:** Drive disconnected, warning on screen to release brake if forward or reverse engaged
- **Applied:** Stabilisers can be deployed
- **Not Applied:** Stabilisers will not deploy
- **Zone G Entry >60°**, park brake applied, stabilisers deployed



## Reached capacity on tyres?

- Deploy stabilisers when boom LMI's locked out

# STH QUICK START GUIDE



## QUICK START GUIDE

Telescopic Handler

STH742 | STH936 | STH1440 | STH1840



### GENERAL GUIDANCE

This is a quick start guide and is not a substitute for the operator's manual. It is the responsibility of the user to read the operator's manual and to follow the instructions in it. It is the responsibility of the user to read the operator's manual and to follow the instructions in it. It is the responsibility of the user to read the operator's manual and to follow the instructions in it.

### CONTENTS

- 1. Safety
- 2. General guidance
- 3. Cabin layout
- 4. Keyboards & encoder
- 5. Joystick
- 6. Joystick functions
- 7. Display
- 8. Radio & Bluetooth
- 9. Start the machine
- 10. Engine shutdown
- 11. Carriage
- 12. Auxiliary venting
- 13. Tie down points
- 14. Lifting the machine
- 15. Fluids & lubricants
- 16. Dimensions
- 17. Maintenance safety
- 18. Daily inspection
- 19. Weekly inspection
- 20. Engine bay
- 21. Rear chassis

### CABIN LAYOUT



### KEYPADS & ENCODER



### JOYSTICK



### JOYSTICK FUNCTIONS



### DISPLAY



### DISPLAY



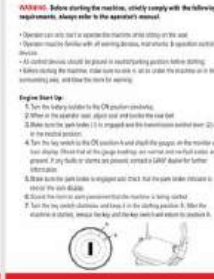
### DPF REGENERATION



### RADIO & BLUETOOTH



### START THE MACHINE



### ENGINE SHUTDOWN



### CARRIAGE



### AUXILIARY VENTING



### TIE DOWN POINTS



### LIFTING THE MACHINE



### FLUIDS & LUBRICANTS

Item	Brand	Specification	Capacity
1	Engine Oil	SAE 15W-40	100L
2	Hydraulic Oil	ISO-L-HM	100L
3	Transmission Oil	SAE 80W-90	100L
4	Brake Fluid	DOT 3	100L
5	Wash Water	Water	100L

### DIMENSIONS

Model	STH742	STH936	STH1440	STH1840
Overall length	4200	4200	4200	4200
Overall width	1800	1800	1800	1800
Overall height	2200	2200	2200	2200
Wheelbase	1200	1200	1200	1200
Ground clearance	150	150	150	150

### MAINTENANCE SAFETY



### DAILY INSPECTION

Item	Check
Engine oil level	Check
Hydraulic oil level	Check
Transmission oil level	Check
Brake fluid level	Check
Wash water level	Check

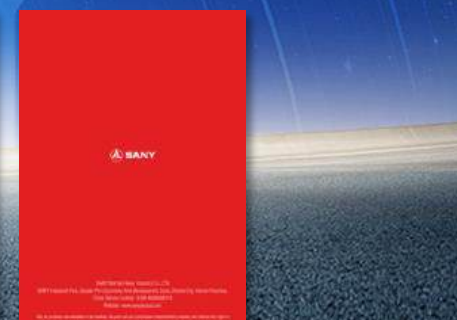
### WEEKLY INSPECTION

Item	Check
Engine oil level	Check
Hydraulic oil level	Check
Transmission oil level	Check
Brake fluid level	Check
Wash water level	Check

### ENGINE BAY



### REAR CHASSIS



# STH DAILY CHECKS VIDEO, OPERATOR FAMILIARISATION

**SANY**



Thank You, Any  
Questions?

**SANY**

