

Safety Alert/ Bulletin

Subject: Excavators



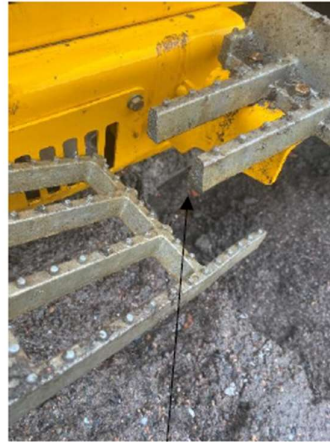
Description of Accident/ Incident

An excavator operator suffered an accident whilst attempting to dismount from a sidestep fixed to a JCB Excavator. The IP suffered significant injuries after falling to the ground from an elevated height, caused primarily by a step defect.

Pictures/ Additional Information



Operator fall position



Step defect

Learnings/ Considerations

- Please ensure when mounting/ dismounting from elevated positions, that you remain vigilant and report any visible defects immediately to the hire company/plant department. This should include a visual inspection of fixed steps.
- Ensure when dismounting from elevated positions, that this is performed similarly to the way you would typically when dismounting from a leaning ladder. Operators must not dismount whilst facing in the direction of travel, nor should they jump from elevated positions. Three points of contact should be maintained whilst mounting and dismounting from ride on plant.
- Your cooperation in ensuring safe mounting/ dismounting principles are followed will help reduce the likelihood of similar accidents occurring in the future.

Disclaimer

The above information has been obtained from reliable Industry sources, however SHBHSF takes no legal responsibility or acceptance for any errors, omissions or misleading statements.